



the REGISTRY

Newsletter of the NIDCD National Temporal Bone, Hearing and Balance Pathology Resource Registry

Inside

Scientific Article: Application of Modern Morphometric Methods for Studying the Human Temporal Bone 1

Laboratory Spotlight: University of California, Los Angeles 6

News: Upcoming Meetings and Information 7

Temporal Bone Donation Brochures: Order Brochures for your Office or Clinic 8

Research Article 1

Laboratory Spotlight 6

News and Announcements 7

The REGISTRY is published semi-annually by the NIDCD National Temporal Bone, Hearing and Balance Pathology Resource Registry. The Registry was established in 1992 by the National Institute on Deafness and Other Communication Disorders (NIDCD) of the National Institutes of Health to continue and expand upon the former National Temporal Bone Banks (NTBB) Program. The Registry promotes research on hearing and balance disorders and serves as a resource for the public and the scientific community about research on the pathology of the human auditory and vestibular systems.

APPLICATION OF MODERN MORPHOMETRIC METHODS FOR STUDYING THE HUMAN TEMPORAL BONE

Akira Ishiyama, M.D., Ivan A. Lopez, Ph.D., Gail Ishiyama, M.D.,
Robert W. Baloh, M.D.

Division of Head and Neck Surgery, Dept. of Surgery, David Geffen School of Medicine at UCLA, Los Angeles, California

The goal of our laboratory has been the advancement of temporal bone science, using rapid-fixation and tissue-processing protocols aimed at antigenic and morphological preservation to allow the application of the most modern methodology for quantification and identification of pathological changes.

Application of Unbiased Stereology to Traditional Archival Temporal Bones

The vast majority of archived human temporal bones have been fixed in formalin, and processed using prolonged decalcification, dehydration, and celloidin-embedding. Specimens are sectioned in the mid-modiolar axis at 20 μ m thickness, and every tenth section is stained with hematoxylin and eosin (Merchant et al., 1993; Schuknecht, 1993). Previous morphometric studies of neuronal number used the Abercrombie (1946) or a related correction method, which is based on assumptions of a uniform size and shape of the object being counted. In the mid 1980s, it was discovered that the traditional assumption-based methods, including the Abercrombie, were inaccurate, creating error rates ranging from 15% to 60% when compared with the true cell number using complete serial reconstruction (Coggeshall and Lekan, 1996; Pakkenberg et al., 1991). The unbiased stereological methods were developed to obtain counts of objects in a 3-dimensional structure by sampling in 2-dimensions, free of sampling and systematic bias (Stereo, 1984).

The unbiased stereological - optical fractionator, is an ideal tool to estimate the number of neurons in traditionally processed archival human temporal bones. The optical fractionator represents a combination of the optical dissector and fractionator (Gundersen et al., 1988). The optical dissector is composed of a series of optical planes of a high-power objective (with high NA) as viewed along the z axis of a relatively thick tissue section. The focal plane (optical section) can be moved a known distance through a thick section, producing a continuous series of superimposed sections within which counting can be carried out with dissector counting rules. Our laboratory uses the Stereo Investigator v3.0 software (MicroBrightField, Inc., Colchester, VT). A personal computer and a monitor are connected to a high resolution color

See Application of Modern Morphometric Methods, page 2

video camera mounted at the top of a Nikon Optiphot microscope, which has differential interference contrast. The motorized stage (LEP Bio-point, Germany) of the microscope is controlled by the software allowing for precise, well-defined movements along the x and y axis. A microcator (Heidenhain, Germany) is attached to the stage of the microscope for precise measurements in the z axis. High image resolution and a thin focal plane are necessary for true stereological technique, which are obtained using oil immersion objective lens with a high numerical aperture (NA = 1.40). Figure 1 demonstrates the optical fractionator to obtain estimates of Scarpa's ganglion neuronal number.

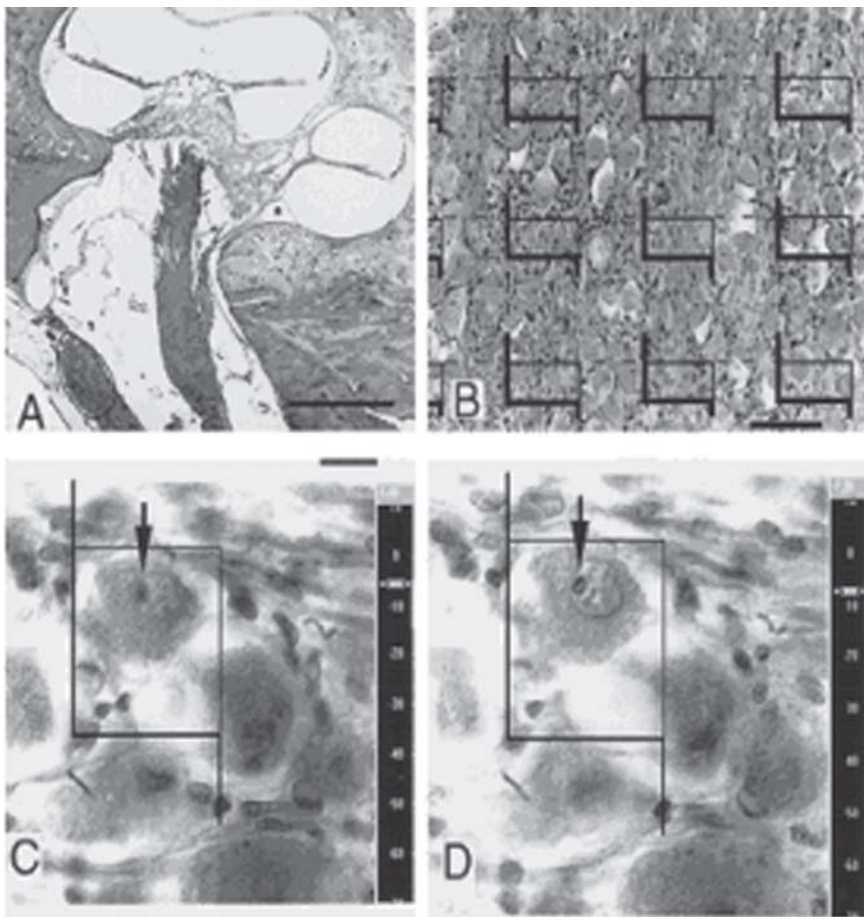
Using the optical fractionator on archival human temporal bones, we estimated the total number of spiral ganglion neurons to be 41,643 from five patients with normal findings on audiogram (Ishiyama et al., 2001; Tang et al., 2002). Previous studies had underestimated the number of spiral ganglion neurons by 16% (Otte et al., 1978), 19% (Hinojosa et al., 1985), and 42% (Pollak et al., 1987). We found that the total number of vestibular ganglion neurons in subjects younger than 60 years of age was 27,635

neurons (Park et al., 2000, 2001; Tang et al., 2002). Previous studies underestimated the number of vestibular ganglion neurons by 36% (Richter, 1980) and 24% (Velazquez-Villasenor et al., 2000). The optical fractionator method was used to obtain unbiased estimates of the vestibular ganglion neuron number in gentamicin and streptomycin ototoxicity, (average post-ototoxicity = 2.2 years), using traditional archival human temporal bones (Ishiyama et al., 2005). The neuronal number was 20,733 in the aminoglycoside, significantly lower than an age-matched normal of 24,902 ($p = 0.004$). A previous study using the Abercrombie method did not demonstrate significant differences in aminoglycoside ototoxicity (Tsuji et al., 2000), however the post-ototoxicity time was significantly shorter (4–12 months).

Undoubtedly, traditionally processed archival human temporal bones have provided a wealth of information, but this methodology has some limitations. There is no single plane of sectioning that provides equally advantageous exposure for all five vestibular endorgans. Also, prolonged fixation in formalin and celloidin-embedding is associated with poor morphological preservation, impeding immuno-

Figure 1. (A) Representative view of the human temporal bone. A contour has been traced around the vestibular ganglion. (B) View of the computer-generated sampling grid that is placed over the vestibular ganglion in a random fashion. A rectangular counting frame (two-dimensional unbiased counting frame) is seen at the upper left corner of

each box of the sampling grid. (C) Counting of nucleoli. Focal depth in μm (measured by the microcator attached to the microscope stage) is indicated on the focal depth bar, where 0 μm represents the top surface of the section. Negative depth values indicate that the microscope is focusing downwards into the section. An unbiased counting frame is put on C and D. The thick border of the frame and its extension is the exclusion line, and the thin border of the frame is the inclusion line. The counting rule of the optical disector is that nucleoli that come into focus within the height of the optical disector and within the counting frame are counted when one moves the focal plane continuously through the section. A nucleolus is considered to be within the counting frame if it is entirely within the counting frame or partially within the counting frame without touching the exclusion line of the counting frame when it first comes into focus. (C) Focal depth is at $-5.68 \mu\text{m}$. (D) Focusing downward to $-7.20 \mu\text{m}$ brings one nucleolus indicated by arrow into focus. Therefore, one nucleolus is counted. Scale bars: 2000 μm in A; 50 μm in B; 5 μm in C.



the
REGISTRY

DIRECTORS

Joseph B. Nadol, Jr., M.D.
Saumil N. Merchant, M.D.
Steven D. Rauch, M.D.
Michael J. McKenna, M.D.
Joe C. Adams, Ph.D.

SCIENTIFIC ADVISORY COUNCIL

Newton J. Coker, M.D.
Howard W. Francis, M.D.
Marlan R. Hansen, M.D.
Raul Hinojosa, M.D.
Herman A. Jenkins, M.D.
Elizabeth M. Keithley, Ph.D.
Robert I. Kohut, M.D.
Fred H. Linthicum, Jr., M.D.
Saumil N. Merchant, M.D.
Joseph B. Nadol, Jr., M.D.
Michael M. Paparella, M.D.
Jai H. Ryu, M.D.
Isamu Sando, M.D., D.M.Sc.
P. Ashley Wackym, M.D.
Charles G. Wright, Ph.D.

COORDINATOR

Sharon DeRosa

ADMINISTRATIVE STAFF

Richard A. Cortese
Tammi King
Carol Y. Ota

NEWSLETTER EDITORS

General: Sharon DeRosa
Medical: Saumil N. Merchant, M.D.
Joseph B. Nadol, Jr., M.D.

NIDCD National Temporal Bone,
Hearing and Balance Pathology
Resource Registry
Massachusetts Eye and Ear Infirmary
243 Charles Street
Boston, MA 02114-3096

(800) 822-1327 Toll-free Voice
(617) 573-3711 Voice
(888) 567-3277 Toll-free TTY
(617) 573-3838 Fax
e-mail: tbregistry@meei.harvard.edu
Web: www.tbregistry.org

histochemical, ultrastructural analysis, and molecular biological studies. Additionally, due to the thickness of the specimens, detailed cytological identification of type I, type II hair cells and supporting cells is subject to error. Lastly, significant postmortem autolysis makes accurate identification of the cellular structures difficult, particularly in the vestibular neuroepithelium.

The Modified Microdissection Technique and Unbiased Stererology of the Vestibular Neuroepitheilium

In order to overcome these limitations, our laboratory has used the modified microdissection technique which allows for rapid fixation because of the immediate removal of the encasing temporal bone, with resultant improved morphological preservation (Hawkins and Johnsson, 1976; Lee et al. 1990; Wright and Meyerhoff, 1989). Also, each of the five vestibular endorgans can be properly oriented to the optimal plane of sectioning for detailed cytological and morphometric studies. Using the traditional processing, only a small fraction (8%) of the utricle is sectioned in a perpendicular plane, predominantly in the superior pole (Merchant, 1999). Thus, we used the modified microdissection technique to obtain unbiased estimates of the type I and type II hair cell number in the human utricle (Gopen et al., 2003) and in the human horizontal crista ampullaris (Lopez et al., 2005b).

The temporal bones are harvested within 3 to 12 hours after death using a

modified protocol as described by Schuknecht (1968). A temporal bone plug cutter is used to remove the petrous temporal bone en bloc. Immediately after removal from the skull base, within the autopsy room, the stapes is carefully detached from the oval window and fixative is infused with a micropipette to ensure a uniform distribution of the fixative throughout the vestibule. After removal from the skull base, the temporal bones are immediately immersed in ice-cold 4% paraformaldehyde plus 0.2% glutaraldehyde in 0.1 mol/L Sorensen buffer at pH 7.4 and are taken immediately to the Morphology Laboratory at UCLA. Within one hour, the vestibular endorgans, nerves, and ganglion are microdissected under the oper-

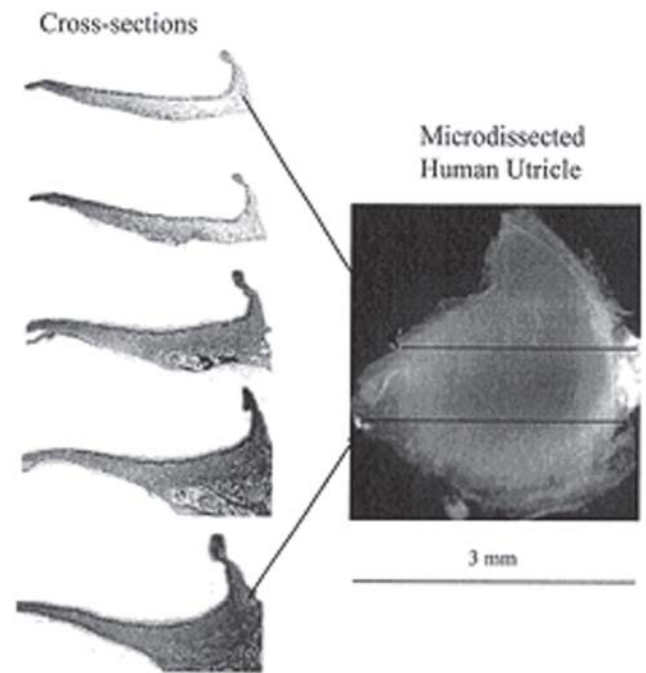


Figure 2. A microdissected human utricle (right side) with a 3-mm bar displayed below. Cross-sections using light microscopy were taken from the midportion of the utricle as depicted by the arrows (left side) for comparison (original magnification x2).

ating microscope. The middle ear is opened, and removal of the encasing temporal bone is continued until the cristae of the three semicircular canals, the utricular and saccular maculae are identified and dissected free by carefully removing the bone around the internal auditory canal. The vestibular nerve (including Scarpa's ganglion cells) is separated from the cochlear and facial nerve. The microdissected tissue is immersed immediately in 4% paraformaldehyde/0.2% glutaraldehyde solution and placed under a shaker rotator for 3 hours, then postfixed with osmium tetroxide for 1 hour, dehydrated in ascending ethyl alcohols, and embedded in epon-Araldite mixture in an oven at 65°C for 48 hours. Serial transverse sections of 2 micron-thickness are made of the entire utricle or crista using a diamond knife with Sorvall MT-2 ultramicrotome, mounted on glass slides, and coun-

terstained with toluidine blue. Figure 2 shows the microdissected human utricle. Camera lucida drawings are made from the transverse sections.

Unbiased estimates of the total type I and type II hair cell number in the utricular macula were obtained using the physical dissector method on microdissected specimens obtained postmortem (Gopen et al., 2003). The average estimate of hair cells was 27,508, consisting of 17,326 type I hair cells and 10,182 type II hair cells from ten normal subjects of ages ranging from 42 to 96 years old, mean = 82. In the age range of the study, there was no effect of age on hair cell counts. The ratio of type I to type II hair cells in the human utricular macula was 1.70: 1. Figure 3 shows the use of morphological characteristics to identify type I and type II hair cells as described by Merchant (1999).

Regional unbiased estimates of the total type I and type II hair cell number, and supporting cell number in the human horizontal crista ampullaris were obtained using the physical dissector method on microdissected specimens obtained postmortem (Lopez et al., 2005b). The crista regions were derived as described by Fernandez et al., 1995; Lysakowski and Goldberg, 1997. Group 1 averaging 51 years old had 8,066 total hair cells; group 2 averaging 84 years had 7,074 hair cells, and group 3 averaging 94 years had 6,009 hair cells. The type I to type II hair cell ratio was near unity. There was a significant decline in both type I and type II hair cell numbers with increasing age, and there was no significant differences of type I to type II ratio between the different age groups. There was no effect of increasing age on supporting cell counts, and the overall average count was 10,002 supporting cells. The peripheral region had more tightly packed hair cells and supporting cells. Thus, it appears that there is a greater effect of increasing age on hair cell numbers in the horizontal crista ampullaris than in the utricular macula, as has been proposed in previous studies (Merchant et al., 2000; Rauch et al., 2001). Total hair cell counts were in alignment with previous studies using surface preparation hand-counting (Watanuki and Schuknecht, 1976), but our unbiased type I and type II density measurements, and type I: type II hair cell ratios were a significant departure from those obtained using Abercrombie methods (Merchant et al., 2000).

We applied the optical fractionator technique to post-mortem microdissected Scarpa's ganglion from five young normal subjects (age ranging from 42 – 49 years old). The ganglion was embedded in paraffin, and cut into 40 micron serial sections. An average of 23,599 neurons was obtained, which is in alignment with estimates obtained using traditional archival human temporal bones (Ishiyama et al., 2004).

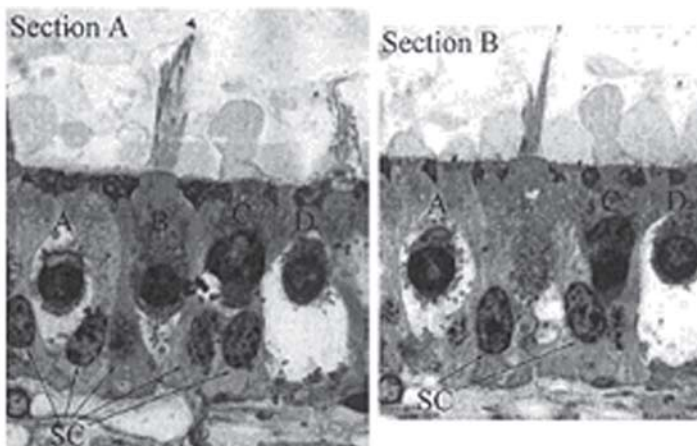


Figure 3. Hair cell morphological types I and II. Two consecutive 2 μm sections (sections A and B) taken from the midportion of a human utricle are viewed using light microscopy with oil immersion (original magnification 60). (Section A) Four nuclei of hair cells are labeled as A, B, C, and D, respectively. Nuclei A and D are from type I hair cells. Type I hair cells are identified by their surrounding calyx, flask shape, larger size, and presence in the upper half of the macular neuroepithelium. Nuclei B and C are from type II hair cells. Type II hair cells are identified by their cylindrical shape, smaller size, and presence in the upper half of the macular neuroepithelium. Several supporting cell (SC) nuclei are evident below these hair cells. Supporting cells are identified by their irregular shapes, multiple intensely stained nucleoli, and presence in the lower half of the macular neuroepithelium. When compared with the next consecutive section (section B), nuclei A, C, and D can still be found and therefore are not assigned a count using the physical fractionator technique. A count is assigned for nucleus B (present in section A but absent in section B). Again, supporting cells are evident below the hair cells.

Microdissection Allows for Immunohistochemical Identification and Unbiased Stereology

We obtained estimates of the number and diameter distribution of nerve fibers in the human crista ampullaris and utricular macula from normals. Vestibular endorgans with the attached vestibular nerve stump were microdissected from postmortem temporal bones. The first group was fixed with paraformaldehyde and post-fixed with osmium tetroxide. The second group was fixed with paraformaldehyde, immunoreacted with monoclonal antibodies against neurofilaments, and post-fixed with osmium tetroxide. Estimates of the number of nerve fibers were obtained using an unbiased stereological method, the fractionator. The average number of fibers in the horizontal, posterior and superior cristae of individuals in group 1 was 1424 nerve fibers. In group 2, there was an average of 1792 nerve fibers. In the macula utriculi from group 1, there was an average of 3026 nerve fibers. In the utricular macula from group 2, there was an average of 3715 nerve fibers. The nerve fiber number in both groups was found to be in the range of previous stud-

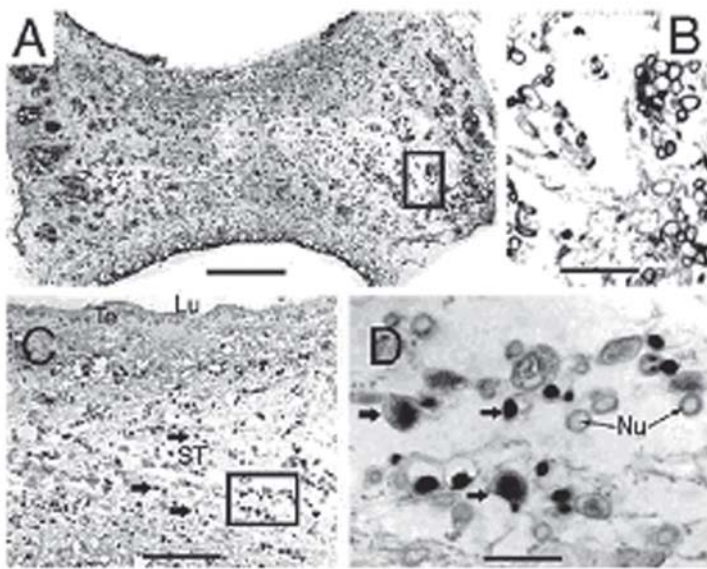


Figure 4. (A) Horizontal 2 μm thick plastic sections from the horizontal crista ampullaris stained with osmium and toluidine blue (group 1). (B) High magnification view from the insert in (A) to illustrate myelinated nerve fibers in the crista stroma. (C) Horizontal section from a crista immunoreacted with antibodies against neurofilaments and thereafter counterstained with osmium and toluidine blue (group 2). (D) Higher magnification view from the insert in (C) to illustrate immunoreactive profiles of nerve terminals (arrows). Note the immunoreactive axoplasm of nerve fibers (arrows). Some nuclei can also be differentiated. St: stroma; Te: transition epithelia; Lu: lumen; Nu: nuclei. Magnification bar in (A) is 300 μm , in (B) is 35 μm , in (C) is 200 μm and in (D) is 25 μm .

ies, however, the number of fibers in group 2 was significantly higher than that in group 1 ($p = 0.01$), indicative that immunohistochemical identification of vestibular nerve fibers increased the sensitivity. Figure 4 shows for the first time the application of unbiased stereology and immunohistochemistry in the postmortem human temporal bone (Lopez et al., 2005a).

In summary, we have applied the modified microdissection technique conducting immediate fixation of the inner ear, and early fixative-infiltration directly onto the neuroepithelium. This enabled us to conduct immunohistochemistry on postmortem specimens to increase the sensitivity to identify small vestibular nerve fibers (Lopez et al., 2005). Also, because of the excellent morphological preservation, we were able to use cytological criteria to apply unbiased stereology to obtain type I and type II vestibular hair cell and supporting cell counts (Lopez et al., 2005b; Gopen et al., 2003). In the future, the use of specific cellular markers may allow the identification of structures and cell types that have altered morphology secondary to otopathological diseases, and may otherwise be difficult to identify. Double- and triple-labeling immunohistochemistry and the use of fluorescent and confocal microscopy can be applied to study the human inner ear anatomy. The immunolocalization of several proteins can be achieved in less than ten days from the temporal bone harvesting time using microdissection, in contrast to traditional protocols that may take up to one year from harvesting to immunostaining. We hope that this modern methodology may potentially open up a new field for future human inner ear research.

References

- Abercrombie M. Estimation of nuclear populations from microtome sections. *Anat Rec* 1946;94:239-247.
- Coggeshall RE and Lekan HA. Methods for determining numbers of cells and synapses: a case for more uniform standards of review. *J Comp Neurol* 1996;364:6-15.
- Fernandez C, Lysakowski A, Goldberg JM. Hair-cell counts and afferent innervation patterns in the cristae ampullares of the squirrel monkey with a comparison to the chinchilla. *J Neurophysiol*. 1995;73(3):1253-69.
- Gopen Q, Lopez I, Ishiyama G, Baloh RW, Ishiyama A. Unbiased stereologic type I and type II hair cell counts in human utricular macula. *Laryngoscope* 2003;113:1132-1138.
- Gundersen HJ, Bagger P, Bendtsen TF, Evans SM, Korbo L, Marcussen N, Møller A, Nielsen K, Nyengaard JR, Pakkenberg B, Sørensen FB, Vesterby A, West MJ. The new stereological tools: disector, fractionator, nucleator and point sampled intercepts and their use in pathological research and diagnosis. *APMIS* 1988;96:857-81.

See Application of Modern Morphometric Studies page 7

The Registry, Vol. 14, No. 1, Summer 2006

LABORATORY SPOTLIGHT

Scientific study of the human temporal bone and related brain tissue is a time-consuming process performed in highly specialized otopathology laboratories by researchers who are dedicated to enhancing our understanding of the pathology underlying disorders of hearing and balance. "Laboratory Spotlight" is a continuing series of articles offering a glimpse inside the laboratories in the United States and abroad conducting temporal bone research.

Temporal Bone Laboratory at Victor Goodhill Ear Center, Los Angeles

Akira Ishiyama, M.D.

In 1966, Ruth Gussen, M.D., a board certified pathologist was recruited by Victor Goodhill, M.D. to direct the UCLA Temporal Bone Laboratory and to conduct histopathological studies. During the early years of the former National Temporal Bone Banks, UCLA was a chapter member under the direction of Paul H. Ward, M.D., Chief of the Division of Head and Neck Surgery. In recent years, the temporal bone laboratory was named the Victor Goodhill Ear Center, a clinical and research center created in honor of Dr. Goodhill, the first otologist at UCLA.

The UCLA Temporal Bone Laboratory houses more than 1000 specimens, many of which have been processed (approximately 400). Information regarding age, gender, race, clinical diagnosis, and histopathology is entered into a database format compatible with the Registry's database. The UCLA Temporal Bone Laboratory contains specimens across a wide range of disease processes affecting the ear. The Temporal Bone Laboratory receives specimens from the western part of the United States, including 13 states.

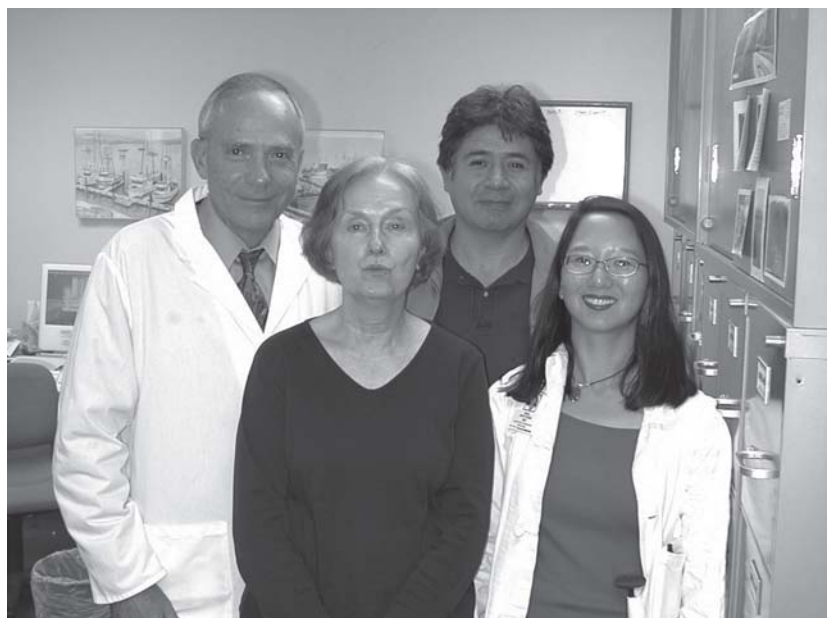
Under the guidance of Vicente Honrubia, M.D. as the Director of the Victor Goodhill Ear Center, the UCLA Temporal Bone Bank began undertaking the development of new techniques to study the human temporal bones, with many publications and presentations in both clinical and basic science meetings and journals. Under P. Ashley Wackym, M.D., the UCLA laboratory initiated studies using modern molecular biologic techniques, including polymerase chain reaction (PCR) and *in situ* hybridization in the human temporal bone.

Under the current directorship of Akira Ishiyama, M.D., the UCLA Temporal Bone Bank has pioneered the application of unbiased stereological techniques to the human temporal bone, using both traditionally processed archival human temporal bones and microdissected specimens. Collaboration with Yong Tang, M.D., Ph.D., a neuroanatomist with expertise in unbiased stereology, has been instrumental in the development of modern, inno-

vative protocols to quantify and identify pathological changes in the human temporal bone. For more than a decade, Ivan Lopez, Ph.D., Director of the Morphology Laboratory at the Victor Goodhill Center, has been developing protocols aimed at rapid-fixation and antigenic and morphological preservation, leading to the development of the modified microdissection technique which enabled the combined application of immunohistochemistry and unbiased stereology to quantify human vestibular nerve fiber number and diameter distribution.

Robert W. Baloh, M.D. and Gail Ishiyama, M.D., a clinician-scientist from the Department of Neurology at UCLA, have been instrumental in the development of prospective, longitudinal clinicopathological correlations of temporal bone with audiovestibular function in aging and otopathological conditions, and the application of unbiased quantification of morphological changes in varied conditions. The UCLA Temporal Bone Bank continues to be active, with postdoctoral students and residents participating in ongoing research

See Temporal Bone Laboratory on next page



From the left: Robert W. Baloh, M.D., Kate Jacobson, Ivan Lopez, Ph.D., Gail Ishiyama, M.D.

Temporal Bone Laboratory, Continued from page 6

projects with strong support from Gerald S. Berke, M.D., Chief of the Division of Head and Neck Surgery.

Individuals interested in becoming involved in the UCLA temporal bone research projects may contact Akira Ishiyama, M.D., Director of the UCLA Temporal Bone Bank at (310) 206-2041. •

Application of Modern Morphometric Methods, Continued from page 5

Hawkins JE, Johnsson Lars-Goran. Microdissection and surface preparation of the inner ear. Chapter I. In Catherine A. Smith and Jack A. Vernon Eds. Handbook of Auditory and Vestibular Research Methods. 1976. Charles C Thomas Publisher, Springfield Illinois USA.

Hinojosa P, Seligsohn R, Lerner SA. Ganglion cell counts in the cochleae of patients with normal audiograms. Acta Otolaryngol 1985;99:8-13.

Ishiyama A, Agena J, Lopez I, Tang Y. Unbiased stereological quantification of neurons in the human spiral ganglion. Neurosci Lett 2001;304:93-96.

Ishiyama A, Lopez I, Ishiyama G, Tang Y. Unbiased quantification of the microdissected human Scarpa's ganglion neurons. Laryngoscope 2004;114:1496-1499.

Ishiyama G, Finn M, Lopez I, Tang Y, Baloh RW, Ishiyama A. Unbiased quantification of Scarpa's ganglion neurons in aminoglycoside ototoxicity. J Vestib Res 2005;15:197-202.

Lee WS, Suarez C, Honrubia V, Gomez J. Morphological aspects of the human vestibular nerve. Laryngoscope 1990;100:756-64.

Lopez I, Ishiyama G, Tang Y, Frank M, Baloh RW, Ishiyama A. Estimation of the number of nerve fibers in the human vestibular endorgans using unbiased stereology and immunohistochemistry. J Neurosci Methods 2005a;145:37-46.

Lopez I, Ishiyama G, Tang Y, Tokita J, Baloh RW, Ishiyama A. Regional estimates of hair cells and supporting cells in the human crista ampullaris. J Neurosci Res 2005b;82:421-431.

Lysakowski A and Goldberg JM. A regional ultrastructural analysis of the cellular and synaptic architecture in the chinchilla cristae ampullares. J Comp Neurol. 1997;389(3):419-43.

Merchant SN, Schuknecht HF, Rauch SD, McKenna MJ, Adams JC, Wudarsky R, Nadol JB Jr. The National Temporal Bone, Hearing, and Balance Pathology Resource Registry. Arch Otolaryngol Head Neck Surg 1993;119:846-853.

Merchant SN, Velazquez-Villasenor L, Tsuji K, Glynn RF, Wall CIII, Rauch SD. Temporal bone studies of the human peripheral vestibular system. Normative vestibular hair cell data. Ann Otol Rhinol Laryngol 2000;109 (Suppl 181):3-13.

Merchant SN. A method for quantitative assessment of vestibular otopathology. Laryngoscope 1999;109:1560-9.

Otte J, Schuknecht HF, Kerr AG. Ganglion cell populations in normal and pathological human cochleae: implications for cochlear

implantation. Laryngoscope 1978;88:1231-1246.

Pakkenberg B, Moeller A, Gundersen HJG, Dam AM, Pakkenberg H. The absolute number of nerve cells in substantia nigra in normal subjects and in patients with Parkinson's disease estimated with an unbiased stereological method. J Neurol Neurosurg Psychiatry 1991;54:30-34.

Park JJ, Tang Y, Lopez I, Ishiyama A. Unbiased stereological quantification of neurons in the human vestibular ganglion. Neuroreport 2000;11:853-857.

Park JJ, Tang Y, Lopez I, Ishiyama A. Age-related change in the number of neurons in the human vestibular ganglion. J Comp Neurol 2001;431:437-443.

Pollak A, Felix H, Schrott A. Methodological aspects of quantitative study of spiral ganglion cells. Acta Otolaryngol 1987;436 (Suppl):37-42.

Rauch SD, Velazquez-Villasenor L, Dimitri PS, Merchant SN. Decreasing hair cell counts in aging human. Ann NY Acad Sci 2001;942:220-227.

Richter E. Quantitative study of human Scarpa's ganglion and vestibular sensory epithelia. Acta Otolaryngol 1980;90:199-208.

Schuknecht HF. Temporal bone removal at autopsy. Preparation and uses. Arch Otolaryngol 1968;87:129-137.

Schuknecht HF. Methods of removal, preparation, and study. In: Schuknecht HF, Pathology of the Ear, 2nd ed. Philadelphia: Lea and Febiger, 1993:1-3.

Stereo DC. The unbiased estimation of number and sizes of arbitrary particles using the disector. J Microsc 1984;134:127-136.

Tang Y, Lopez I, Ishiyama A. Application of unbiased stereology on archival human temporal bone. Laryngoscope 2002;112:526-533.

Tsuji K., Velazquez-Villasenor L, Rauch SD, Glynn RJ, Wall CIII, Merchant SN. Temporal bone studies of the human peripheral vestibular system. Aminoglycoside ototoxicity. Ann Otol Rhinol Laryngol Suppl, 2000;181: 20-5.

Velazquez-Villasenor L, Merchant SN, Tsuji K, Glynn RJ, Wall CIII, Rauch SD. Temporal bone studies of the human peripheral vestibular system, II. Normative Scarpa's ganglion cell data. Ann Otol Rhinol Laryngol 2000;109;14-19.

Watanuki K, Schuknecht HF. A morphological study of human vestibular sensory epithelia. Arch Otolaryngol 1976;102:583-588.

Wright C, Meyerhoff WL. Microdissection in human temporal bone morphology. Ann Otol Rhinol Laryngol Suppl 1989;143:25-28. •

Upcoming Meetings the Registry will be Attending

2006 AAO-HNSF Annual Meeting & OTO EXPO in Toronto, Ontario, Canada, September 17-20, 2006
<http://www.entnet.org/>

ARO 2007 MidWinter Meeting, at The Hyatt Regency, Denver, CO, February 10-15, 2007
<http://www.aro.org/>



**NIDCD National Temporal Bone, Hearing & Balance Pathology
Resource Registry**
Massachusetts Eye and Ear Infirmary
243 Charles Street
Boston, MA 02114-3096

NON-PROFIT ORG
U.S. POSTAGE
PAID
BOSTON, MA
PERMIT NO. 53825

Address Service Requested

PLEASE! Notify us of your change of address before you move.
Each undelivered newsletter is returned to the Registry office at
a cost of \$.70. Our loss is over \$1.00 per unit.
Thank you!

Free Brochures for your Office or Clinic about Temporal Bone Research and Donation

That Others May Hear is a short brochure which describes briefly the functions of the Registry, and answers commonly asked questions regarding the temporal bone donation process. (Dimensions: 9" x 4")

The Gift of Hearing and Balance: Learning about Temporal Bone Donation is a 16-page, full-color booklet which describes in more detail the benefits of temporal bone research. It also answers commonly asked questions regarding the temporal bone donation process. (Dimensions: 7" x 10")

If you are willing to display either or both of these brochures, please complete the form below and return it to the Registry by mail or fax. The brochures will be sent to you **free of charge**. Please circle the amount requested for each brochure or write in amount not listed.

That Others May Hear _____ **25 50 100**

The Gift of Hearing and Balance _____ **25 50 100**

Enrollment Packets _____ **25 50 100**

Newsletters _____ **25 50 100**

NAME: _____

ADDRESS: _____

ADDRESS: _____

CITY, STATE, ZIP: _____

TELEPHONE: _____

Mail or fax this form to the Registry at: NIDCD National Temporal Bone, Hearing and Balance Pathology Resource Registry,
Massachusetts Eye and Ear Infirmary, 243 Charles Street, Boston, MA 02114
Toll-free phone: (800) 822-1327, Fax: (617) 573-3838, Email: tbregistry@meei.harvard.edu