

At Long Last...

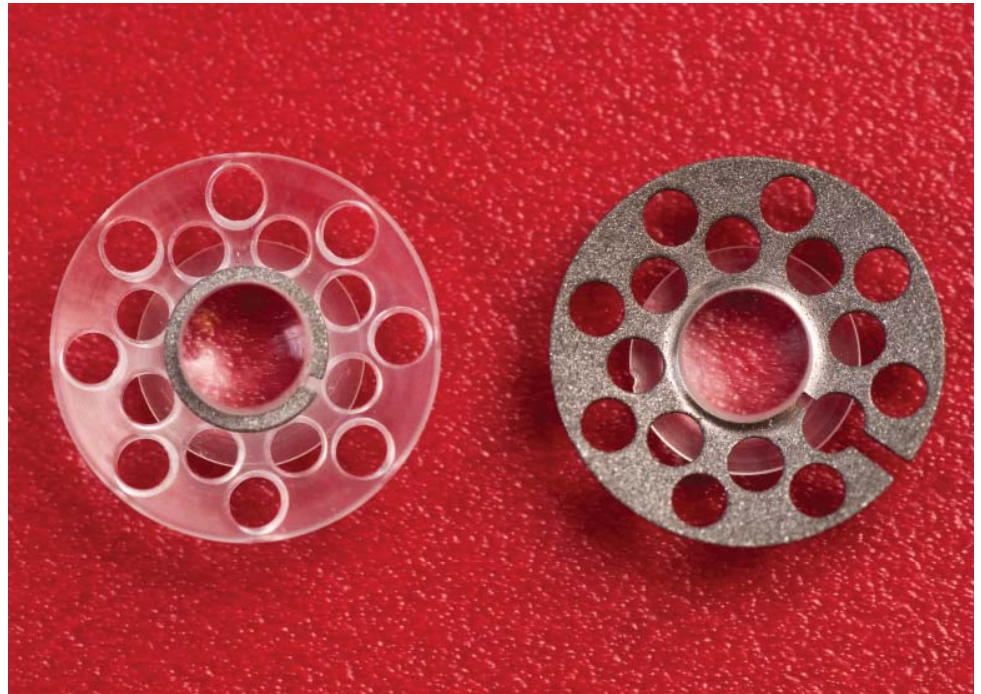
Good news: the US FDA has approved a revised design of the Boston Keratoprosthesis, both types I and II.

This new design includes a change in back plate from PMMA (shown on the left) to titanium (shown on the right), and eliminates the need for a locking ring by incorporating the locking ring function into the back plate itself.

The result is a two-piece design with a PMMA optic and a slitted titanium back plate that is easier to assemble, and with a much lower profile in the anterior chamber. Existing clinical data suggest that this may reduce the rate of retroprosthetic membrane formation.

It will be up to the individual KPro surgeon to choose between PMMA and titanium when filling in the order form. We hope the new design will be ready for marketing in late 2013.

The metallic appearance of sandblasted titanium may be less desirable cosmetically for the patient. Therefore, we are working on a method, not yet FDA approved, to imbue the back plate with a brown or blue hue to improve the postoperative appearance.



*A Boston Keratoprosthesis update from
Harvard Medical School / Mass. Eye and Ear Department of Ophthalmology*



HARVARD
MEDICAL SCHOOL

DEPARTMENT OF
Ophthalmology



**Massachusetts
Eye and Ear**
experience. life.

Boston KPro *news*

In this issue:

FDA Approves Boston KPro
Types I and II 1

Boston KPro Usage 2

Profiles of Distinguished
KPro Surgeons 4

The Boston KPro Team 6

Boston KPro Bibliography . . 8

American Academy of
Ophthalmology Meeting . . . 19

KPro Events 19

*The Boston KPro
newsletter is published
once annually.*

Co-Editors:

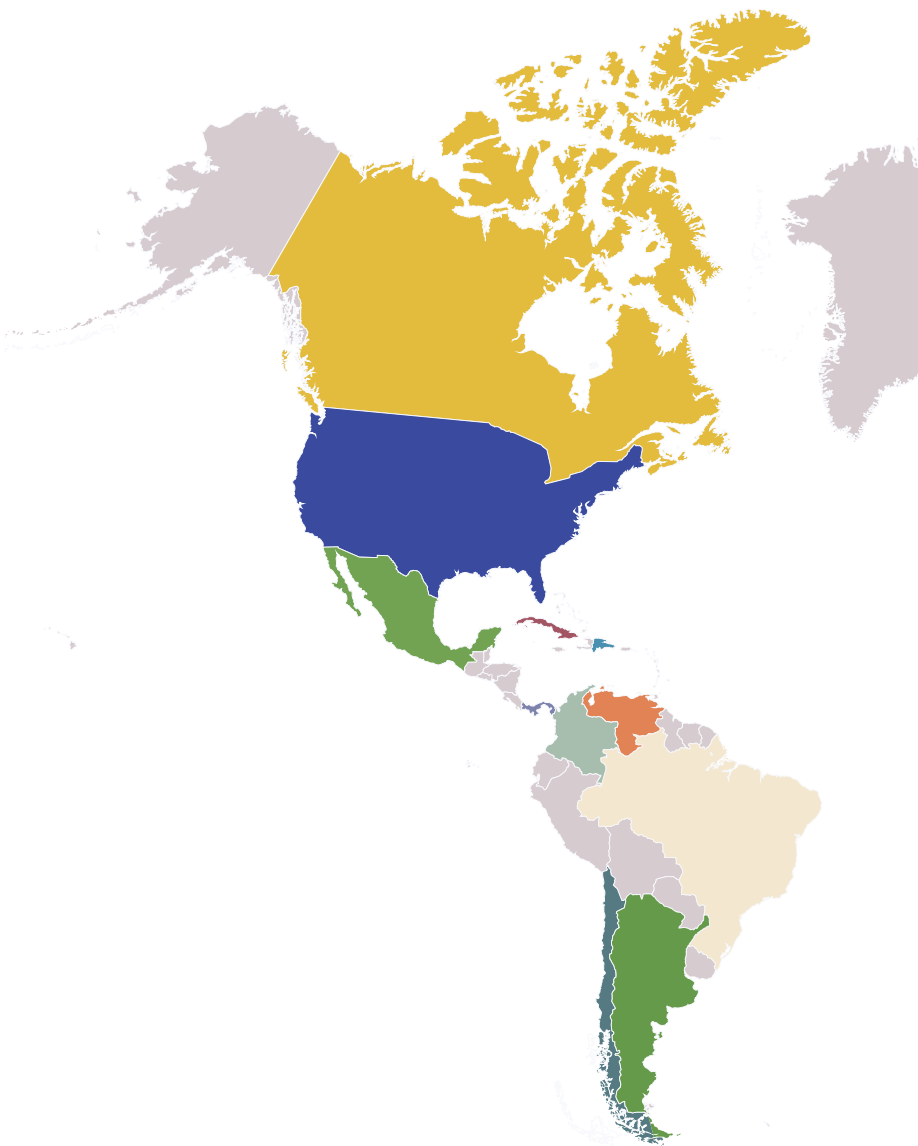
James Chodosh, MD, MPH
Director, Boston KPro Clinical Programs

Allyson Tauber, BS

Claes Dohlman, MD, PhD
Director, Boston KPro Research and
Development

Larisa Gelfand

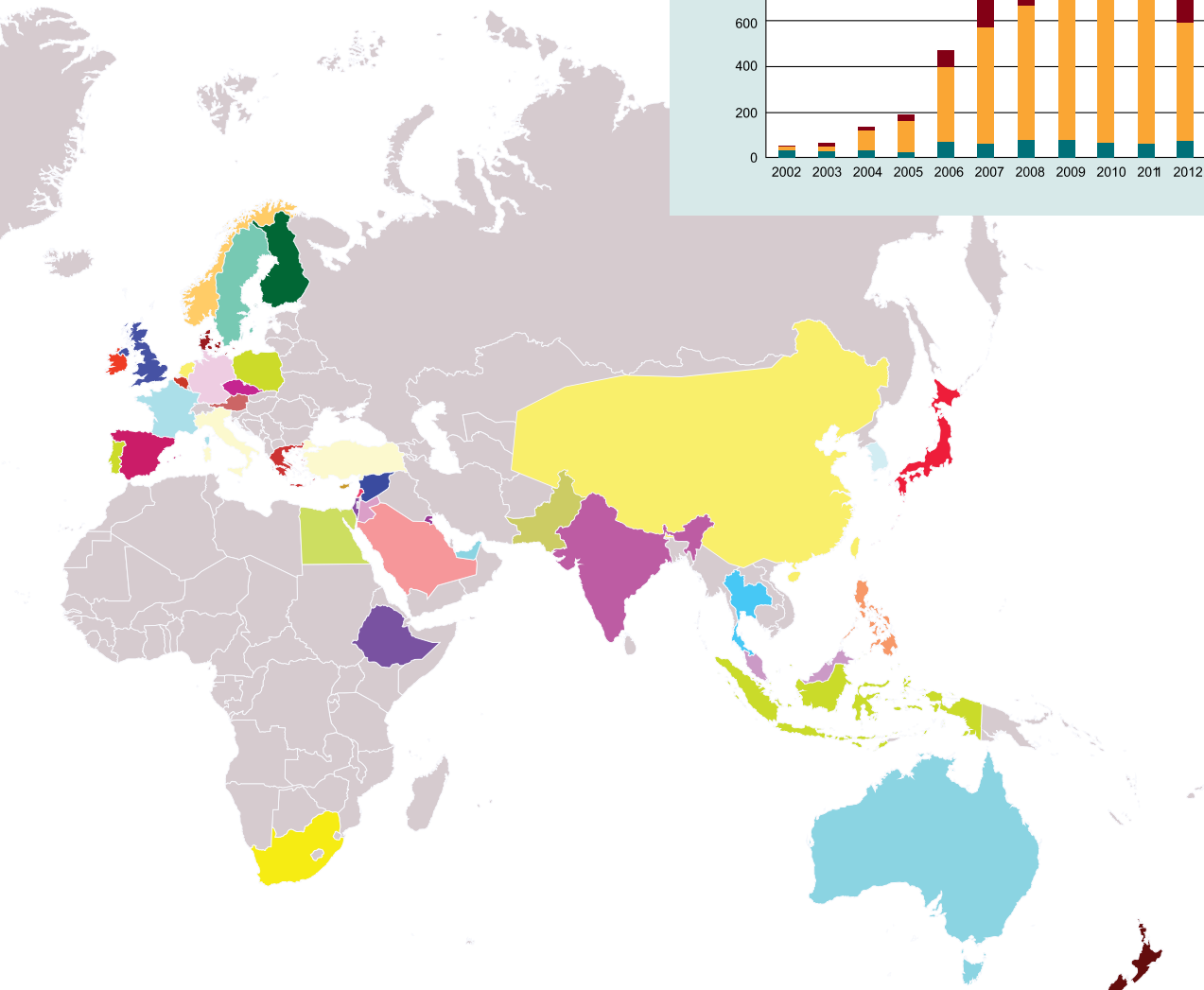
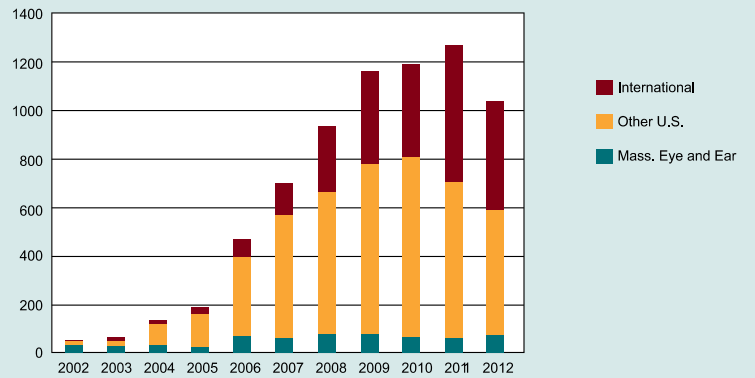
The Boston KPro is the most comm artificial cornea in the world:



 Argentina	 Australia	 Austria
 Chile	 China	 Colombia
 Denmark	 Dominican Republic	 Dubai
 Finland	 France	 Germany
 Ireland	 Israel	 Italy
 Korea	 Kuwait	 Lebanon
 New Zealand	 Norway	 Panama
 Portugal	 Saudi Arabia	 Singapore
 Syria	 Taiwan	 Thailand

only used

Boston Keratoprosthesis Usage



- | | | |
|--|---|--|
|  Belgium |  Brazil |  Canada |
|  Cuba |  Cyprus |  Czech Republic |
|  Egypt |  England |  Ethiopia |
|  Greece |  Hong Kong |  India |
|  Japan |  Jordan |  Kingdom of Bahrain |
|  Malaysia |  Mexico |  Netherlands |
|  Pakistan |  Philippines |  Poland |
|  South Africa |  Spain |  Sweden |
|  Turkey |  United States |  Venezuela |

Profiles of Distinguished Boston KPro Surgeons



Peter Zloty, MD

Peter Zloty, MD

Dr. Peter Zloty is a board certified and fellowship trained ophthalmologist specializing in corneal transplants, refractive surgery, and cataracts. He is a national and international speaker and has authored many articles and book chapters in his field.

Dr. Zloty attended Rensselaer in Troy, New York in an accelerated undergraduate degree program in Biomedicine. He then transferred to Albany Medical College in Albany, New York, earning a BS in 1982 and MD in 1984. After medical school, he interned at Albany Medical Center Hospital. An active duty tour in the US Navy came next, earning him the rank of Lieutenant Commander and a Sea Service Medal. Active duty service was performed stateside in the Newport Naval Hospital Emergency Medicine Department and Brig Medical Service, and at sea he worked as an intensive care physician. Subsequently he returned to Albany for residency in Ophthalmology. He was then hired as a Clinical Instructor, staffing the first year resident's clinic, and concurrently served as a fellow in Corneal and External Disease, under Michael W. Belin, MD.

While in private practice in Dothan, Alabama, Dr. Zloty has continued to teach externs from the UAB School of Optometry, as well as national and international courses and symposia. He has traveled to Honduras and East Timor on multiple occasions doing medical and surgical humanitarian mission work, and is an instructor at the American Academy of Ophthalmology Annual Meeting for the Boston Keratoprosthesis.

Joseph Tauber, MD

Dr. Joseph Tauber received his doctorate from Harvard Medical School, and continued his training in internal medicine at Beth Israel Hospital and in ophthalmology at Tufts-New England Medical Center. He went on to complete two years of Ocular Immunology and Corneal and External Disease fellowship training at Massachusetts Eye and Ear, under Stephen Foster, MD and Claes Dohlman, MD, PhD. Dr. Tauber moved to Kansas City in 1989 where he joined a private practice and became a Clinical Professor at the University of Kansas Department of Ophthalmology.

In recent years, Dr. Tauber has devoted his time exclusively to his private practice and clinical research.

Dr. Tauber's clinical interests focus on immunologic and ocular surface disease. He is a nationally recognized authority in dry eye and meibomian gland disease management, and he co-authored the treatment chapter of the report of the International Meibomitis Workshop sponsored by the Tear Film and Ocular Surface Society (TFOS) in 2011.

In private practice in Kansas City, MO, Dr. Tauber maintains an academic approach to his career in ophthalmology. He remains avidly involved in clinical research, and has been a principal investigator in over 80 studies of high-risk corneal transplantation, inflammation and allergic eye diseases, corneal infectious diseases, and various aspects of ocular surface disease. In addition, he has written eight book chapters and over 50 articles for peer-reviewed medical journals. Dr. Tauber has taught a two hour course on advanced treatment of ocular surface disease at the Annual Meeting of the American Academy of Ophthalmology for the past ten years.

After gaining experience with the Boston Keratoprosthesis during his training, Dr. Tauber brought the technique to the Midwest where he has taught a number of regional corneal surgeons how to perform this surgery and how to manage post-operative care and complications. His experience with the Boston Keratoprosthesis is also notable, having performed over 100 cases to date.

Dr. Tauber and his wife, Judi, have three children – Allyson (23), Jessica (21), and David (19). Allyson has spent the last year doing Boston Keratoprosthesis research at Massachusetts Eye and Ear, marking the first two-generation Dr. Dohlman mentorship. According to Dr. Tauber, this accomplishment makes him more proud than any other.

Kenneth Goins, MD

Dr. Kenneth Goins attended the University of Tennessee and graduated *magna cum laude* with a BA in Organismal and Systems Biology in 1982. He attended medical school at the University of Kentucky, graduating *magna cum laude* in 1986. His Ophthalmology residency



Joseph Tauber, MD



Kenneth Goins, MD

was completed in 1990 at the University of Kentucky, followed by a Cornea fellowship at Duke University in 1991.

After a short period of private practice in Lumberton, North Carolina, Dr. Goins became the director of Cornea and External Disease at the University of Chicago from 1992 to 2003. During this time, he achieved the rank of Associate Professor of Clinical Ophthalmology and was voted the Resident Teacher of the Year in 1994, 1996, and 2001. In 2003, he joined the faculty at the University of Iowa Department of Ophthalmology. Since 2006, he has been the medical director of the Iowa Lions Eye Bank, while being a member of the Accreditation Board within the Eye Bank Association of America (EBAA).

Dr. Goins was the first ophthalmologist in Iowa to perform deep lamellar endothelial keratoplasty (DLEK) in 2003, Alpha-Cor artificial cornea in 2004, femtosecond laser assisted keratoplasty in 2007, and Boston Keratoprosthesis in 2007. He achieved the rank of Professor of Ophthalmology and received the Resident Teacher of the Year Award in 2007. Goins has authored over 40 peer-reviewed publications, while his research interests include anterior segment imaging, resident outcomes in PRK and LASIK, and alternative keratoplasty techniques. Since November 2010, he has been a member of the Board of Directors for the American Board of Ophthalmology (ABO). He married Sheila Marie Taylor in 1994, and has two sons, Kenneth Jr (17) and William (15).

Miguel Angel Lopez, MD

Dr. Miguel Angel Lopez attended the University Autonoma of Santo Domingo, where he gained his basic medical education. Following medical school, he completed a year in general surgery, and a year in ophthalmology at Salvador B. Gautier. Dr. Lopez completed his residency at Elias Santana Hospital, and went on to do a clinical fellowship in corneal and external eye diseases, as well as refractive surgery at Massachusetts Eye and Ear.

Following this fellowship, he returned to the Dominican Republic and started the first cornea department in his country, which included the creation of a cornea fellowship program. The fellowship program he created was at the Elias Santana Hospital, where young doctors from Ecuador, Costa Rica, Venezuela, Azerbaijan, and Santo Domingo, were trained and now are leaders in the cornea fields in their

respective countries. Dr. Lopez is a member of the American Academy of Ophthalmology, Cataract and Refractive Surgery, Cornea Society, Pan-American Association, and was past-president of the Dominican Society of Ophthalmology.

Dr. Lopez collaborated directly with Dr. Juan Batlle in 1993 to reintroduce the use of the Amniotic Membrane. He has performed close to 70 Boston Keratoprosthesis surgeries, using both the old and new models. Most of these cases were chemical burns. In 2009, Dr. Lopez became the first to implant the Telemetric transducer in a human, to monitor intraocular pressure. He often lectures about his experience with the Boston Keratoprosthesis in the Dominican Republic, and has presented at the World Cornea Congress 2010 and ASCRS 2012.

Jaime Etxebarria, MD

Dr. Jaime Etxebarria received his medical training at Basque Country University. He completed his Ophthalmology residency at Cruces Hospital, Bilbao, Spain, and furthered his training in Cornea and Ocular Surface with Dr. Scheffer C. G. Tseng at the Bascon Palmer Eye Institute.

Since 2002, Dr. Etxebarria has led the Cornea Department of Cruces Hospital. He performs different kinds of cornea surgery including DALK, DSAEK, DMEK and KPro, having done almost 70 cases of the Boston Keratoprosthesis in the last seven years. He has also given many national and international training courses on the Boston Keratoprosthesis use and postoperative care.

Dr. Etxebarria is presently leading a research group in Cruces Hospital, and the cell biology and histology departments of the School of Medicine and Dentistry of Basque Country University, on limbal stem cell expansion and on the use of various types of blood-derivatives for corneal wound healing. To improve diagnosis of limbal stem cell deficiency, he collaborates with industrial companies on molecular tests and proteomic diagnosis of blepharitis and dry eye.

He is married to Teresa and has two children, Jaime and Lucía. Some of his hobbies are biking, diving, and rowing.



Miguel Angel Lopez, MD



Jaime Etxebarria, MD

THE BOSTON KPRO TEAM



Claes Dohlman, MD, PhD
Translational Research



James Chodosh, MD, MPH
Surgery, Translational Research



Kathryn Colby, MD, PhD
Surgery, Clinical Research



Roberto Pineda II, MD
Surgery, Clinical Research



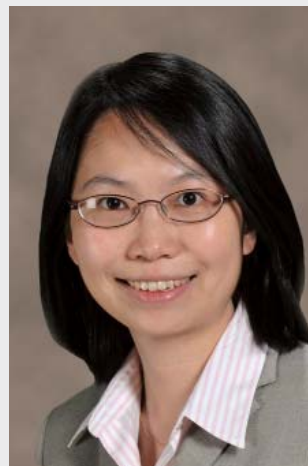
Samir Melki, MD, PhD
Surgery, IOP Transducers



Joseph B. Ciolino, MD
Surgery, Clinical Research



Daniel Kohane, MD, PhD
Bioengineering
MIT/Boston Children's
Hospital



Lucy Shen, MD
Glaucoma



Irmgard Behlau, MD
Antimicrobial Coating &
Infection Prevention



Andrea Cruzat, MD
Surgical Innovations



Eleftherios Paschalis, PhD
Bioengineering



Borja Salvador, MD
Surgical Innovations



Alja Crnej, MD
Surgical Innovations



Elise Taniguchi, MD
Surgical Innovations



Marie-Claude Robert, MD
Surgical Innovations



Michelle White, MD, MPH
Surgical Innovations



Christina Grassi
Surgical Innovations



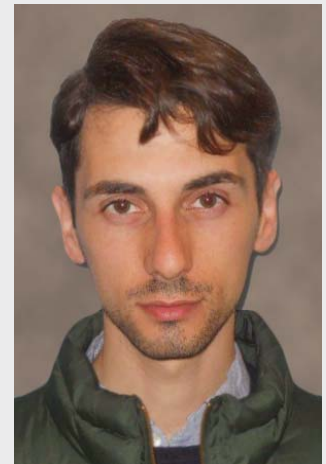
Larisa Gelfand
Manager Boston KPro
Program



Rhonda Walcott-Harris
Administrative Assistant



Mary Lou Moar
Consulting KPro
Administrator



Marcio Correa
Project Coordinator

Revised – August 22, 2013

Dohlman CH, Webster RG, Biswas SK, Doane MG, Holmberg A. “Collar-button prosthesis glued to a corneal graft.” In: Polack FM, ed. *Cornea and External Diseases of the Eye*. First Inter-American Symposium. Springfield, IL: Charles C. Thomas, 1970:189-192.

Dohlman CH, Schneider H, Doane MG. Prosthokeratoplasty. *Am J Ophthalmol*. 1974; 77(5):694-700.

Dohlman CH. Biology of complications following keratoprosthesis. *Cornea*. 1983; 2(3):175-176.

Dohlman CH. Postoperative regimen and repair of complications after keratoprosthesis surgery. *Refract and Corneal Surg*. 1993; 9:198.

Dohlman CH, Doane MG. Some factors influencing outcome after keratoprosthesis surgery. *Cornea*. 1994; 13(3):214-218.

Dohlman CH. “Keratoprostheses.” In: Albert D, Jakobiec FJ, eds. *Principles and Practice of Ophthalmology*. Philadelphia: WB Saunders; 1994:338-342.

Dohlman CH, Doane MG. “Keratoprosthesis in end-stage dry eye.” In: Sullivan DA, ed. *Lacrimal Gland, Tear Film and Dry Eye Syndromes*. New York: Plenum Press; 1994:561-564.

Dohlman CH, Terada H. “Keratoprosthesis in pemphigoid and Stevens-Johnson syndrome.” In: Sullivan DA, ed. *Lacrimal Gland, Tear Film and Dry Eye Syndromes*. New York: Plenum Press; 1994:1021-1025.

Doane MG, Dohlman CH, Bearnse G. Fabrication of a keratoprosthesis. *Cornea*. 1996; 15:179-184.

Dohlman CH, Terada H. “The management of severe ocular surface disease.” In: *The First International Symposium of Ophthalmology*. Japanese Ophthalmological Society; 1996:311-314.

Dohlman CH, Waller SG, Netland PA. “Keratoprosthesis surgery.” In: Lindquist T, Lindstrom R, eds. *Ophthalmic Surgery Update #4*. Chicago: Mosby; 1996:V-L-0-V-L-24.

Dohlman CH. “Keratoprosthesis.” In: Krachmer JH, Mannis MJ, Holland EJ, eds. *Cornea*. St. Louis: Mosby; 1997:1855-1863.

Teichmann K, Wagoner MD, Al-Raji A, Badr I, Netland PA, Dohlman CH. “Surgical rehabilitation of end-stage ocular cicatricial pemphigoid with the Dohlman-Doane keratoprosthesis.” In: *XIth Congress of the European Society of Ophthalmology*. Budapest; 1997:259-262.

Netland PA, Terada H, Dohlman CH. Glaucoma associated with keratoprosthesis. *Ophthalmology*. 1998; 105(4):751-757.

Dohlman CH, Netland PA, Fung WC. Experience with a keratoprosthesis. *Ann Inst Barraquer (Barc)*. 1999; 28(Suppl):105-108.

Dohlman CH, Waller SG. “The Dohlman Keratoprosthesis.” In: Brightbill FS, ed. *Corneal Surgery: Theory, Technique and Tissue*. St. Louis: Mosby; 1999:541-549.

Alfonso EC. Clinical experience with the Dohlman-Doane keratoprosthesis. *Ann Inst Barraquer (Barc)*. 1999; 28:49-50.

Dohlman CH, Power WJ. “Keratoprosthesis.” In: Albert D, Jakobiec FJ, eds. *Principles and Practice of Ophthalmology*. Philadelphia: WB Saunders; 1999:1069-1079.

Yaghouti F, Dohlman CH. Innovations in keratoprosthesis: Proved and unproved. *Int Ophthalmol Clin*. 1999; 39(1):27-36.

- Dohlman CH. "Guillaume Pellier." In: Mannis MJ, Mannis AA, eds. Corneal Transplantation: A History of Profiles (Hirschberg History of Ophthalmology). Oostende, Belgium: JP Wayenborgh; 1999:53-64.
- Dohlman CH, D'Amico DJ. Can an eye in phthisis be rehabilitated? A case of improved vision with 1 year follow-up. *Arch Ophthalmol*. 1999; 117(1):123-124.
- Mannis MJ, Dohlman CH. "The artificial cornea: A brief history." In: Mannis MJ, Mannis AA eds. Corneal Transplantation: A History of Profiles (Hirschberg History of Ophthalmology). Oostende, Belgium: JP Wayenborgh; 1999: 321-335.
- Al-Merjan J, Sadeq N, Dohlman CH. Temporary tissue coverage of keratoprosthesis. *Mid-East J Ophthalmol*. 2000; 8:12-18.
- Dohlman CH. Outcome after keratoprosthesis surgery: Toward common definitions. *Ann Inst Barraquer*. 2001; 30:233-235.
- Dohlman CH. Keratoprosthesis in non-cicatrizing conditions. *Ann Inst Barraquer (Barc)*. 2001; 30:41.
- Dohlman CH. Glaucoma following keratoprosthesis. *Ann Inst Barraquer*. 2001; 30:133.
- Yaghouti F, Nouri M, Abad JC, Power WJ, Doane MG, Dohlman CH. Keratoprosthesis: preoperative prognostic categories. *Cornea*. 2001; 20(1):19-23.
- Nouri M, Terada H, Alfonso EC, Foster CS, Durand ML, Dohlman CH. Endophthalmitis after keratoprosthesis: incidence, bacterial causes, and risk factors. *Arch Ophthalmol*. 2001;119(4):484-489.
- Khan B, Dudenhofer EJ, Dohlman CH. Keratoprosthesis: An update. *Curr Opin Ophthalmol*. 2001; 12:282-287.
- Dohlman CH, Grosskreutz C, Dudenhofer EJ, Rubin PAD. Can a glaucoma shunt be safely extended to the lacrimal sac or the ethmoid sinuses in keratoprosthesis patients? *Digit J Ophthalmol*. 2001; 7:241.
- Nouri M, Terada H, Durand ML, Alfonso EC, Dohlman CH. Risk factors for endophthalmitis in keratoprosthesis patients. *Ann Inst Barraquer (Barc)*. 2001; 30:123-124.
- Dohlman CH, Dudenhofer EJ, Khan BF, Dohlman JG. "Corneal blindness from end-stage Sjögren's Syndrome and graft-versus-host disease." In: Sullivan D, ed. Lacrimal Gland, Tear Film and Dry Eye Syndromes. New York: Kluwer Academic/Plenum Publishers; 2002:1335-1338.
- Ray S, Khan BF, Dohlman CH, D'Amico DJ. Management of vitreoretinal complications in eyes with permanent keratoprosthesis. *Arch Ophthalmol*. 2002;120(5):559-566.
- Dohlman CH, Dudenhofer EJ, Khan BF, Morneault S. Protection of the ocular surface after keratoprosthesis surgery: the role of soft contact lenses. *CLAO J*. 2002; 28(2):72-74.
- Dohlman CH. Do a corneal transplant? Do a keratoprosthesis? Do nothing?: The uncertain borders between indications. *Ann Inst Barraquer*. 2003; 32:3-4.
- Dohlman CH, Abad JC, Dudenhofer EJ, Graney JM. "Keratoprosthesis: Beyond corneal graft failure." In: Spaeth G, ed. Ophthalmic Surgery. Principles and Practice. Philadelphia: WB Saunders; 2003:199-207.
- Dudenhofer EJ, Nouri M, Gipson IK, Baratz KH, Tisdale AS, Dryja TP, Abad JC, Dohlman CH. Histopathology of explanted collar button keratoprostheses: A clinicopathologic correlation. *Cornea*. 2003;22(5):424-428.
- Dohlman CH. When corneal grafts have failed: The option of keratoprosthesis. *Rev Refract Surg*. 2003; 4:31-32.

- Dohlman CH. Keratoprosthesis in endstage corneal disease. *Acta Ophthalmologica Scandinavica*. 2004; 1;336-337.
- Rubin PA, Chang E, Bernardino CR, Hatton MP, Dohlman CH. Oculoplastic technique of connecting a glaucoma valve shunt to extraorbital locations in cases of severe glaucoma. *Ophthalm Plast Reconstr Surg*. 2004; 20(5):362-367.
- Dohlman CH, Barnes S, Ma J. "Keratoprosthesis." In: Krachmer JH, Mannis MJ, Holland EJ, eds. *Cornea*, 2nd edition. St. Louis: Mosby; 2004:1719-1728.
- Dohlman CH, Nouri M. "Keratoprosthesis surgery." In: Foster CS, Azar D, Dohlman CH, eds., Smolin and Thoft's *The Cornea*, 4th edition. Philadelphia: Lippincott, Williams and Wilkins; 2005:1085-1095.
- Abad JC, Dohlman CH. "Queratoprotesis." In: Benitez del Castillo JM, Duran JA, Rodriguez MT, eds. *Superficie Ocular. LXXX Ponencia Oficial de la Sociedad Espanola de Oftalmologia*. Industria Grafica Mae, SL. Espana; 2005: 463-470.
- Nouri M, Durand ML, Dohlman CH. Sudden reversible vitritis after keratoprosthesis: An immune phenomenon? *Cornea*. 2005; 24(8): 915-919.
- Ma J, Graney JM, Dohlman CH. Repeat penetrating keratoplasty versus the Boston Keratoprosthesis in graft failure. *Int Ophthalmol Clin N Am*. 2005; 45(4):49-59.
- Aquavella JV, Qian Y, McCormick GJ, Palakuru JR. Keratoprosthesis: The Dohlman-Doane device. *Am J Ophthalmol*. 2005; 140(6):1032-1038.
- Ilhan-Sarac O, Akpek EK. Current concepts and techniques in keratoprosthesis. *Curr Opin Ophthalmol*. 2005;16(4):246-250.
- Dohlman CH, Dohlman JG. Aqueous shunt to the ocular surface for severe dry eyes. *Digit J Ophthalmol*. 2005; 11:2.
- Harissi-Dagher M, Dohlman CH. The Boston Keratoprosthesis. *Contemp Ophthalmol*. 2006; 5:1-7.
- Dohlman CH, Harissi-Dagher M, Khan BF, Sippel KC, Aquavella J, Graney JM. Introduction to the use of the Boston Keratoprosthesis. *Expert Rev Ophthalmol*. 2006; 1:41-48.
- Botelho PJ, Congdon NG, Handa JT, Akpek EK. Keratoprosthesis in high-risk pediatric corneal transplantation: First two cases. *Arch Ophthalmol*. 2006; 124(9):1356-1357.
- Zerbe BL, Belin MW, Ciolino JB; Boston Type 1 Keratoprosthesis Study Group. Results from the multicenter Boston Type 1 Keratoprosthesis Study. *Ophthalmology*. 2006;113(10):1779.e1-7.
- Aquavella JV, Qian Y, McCormack GJ, Palakuru JR. Keratoprosthesis: Current techniques. *Cornea*. 2006;25(6):656-662.
- Khan BF, Harissi-Dagher M, Dohlman CH. "Keratoprosthesis." In: Albert DM, Miller JW, eds, Azar DT, Blodi BA, associate eds. *Albert and Jakobiec's Principles and Practice in Ophthalmology*, 3rd edition. London: Elsevier; 2007.
- Barnes SD, Dohlman CH, Durand ML. Fungal colonization in the Boston Keratoprosthesis. *Cornea*. 2007;26(1):9-15.
- Khan BF, Harissi-Dagher M, Khan DM, Dohlman CH. Advances in Boston Keratoprosthesis: Enhancing retention and prevention of infection and inflammation. *Int Ophthalmol Clin*. 2007;47(2):61-71.
- Khan BF, Harissi-Dagher M, Pavan-Langston D, Aquavella JV, Dohlman CH. The Boston Keratoprosthesis in herpetic keratitis. *Arch Ophthalmol*. 2007;125(6):745-749.
- Kocaturk T, Dohlman CH. Keratoprotez Cerrahisi. *Turkiye Klinikleri J Ophthalmol*. 2007;16:47-55.

- Akpek EK, Harissi-Dagher M, Petrarca R, Butrus SI, Pineda R 2nd, Aquavella JV, Dohlman CH. Outcomes of Boston Keratoprosthesis in aniridia: A retrospective multicenter study. *Am J Ophthalmol*. 2007;144(2):227-231.
- Harissi-Dagher M, Khan BF, Schaumberg DA, Dohlman CH. Importance of nutrition to corneal grafts when used as a carrier of the Boston Keratoprosthesis. *Cornea*. 2007; 26(5):564-568.
- Dohlman CH, Harissi-Dagher M, Graney J. The Boston Keratoprosthesis: A new threadless design. *Digit J Ophthalmol*. 2007;13:3.
- Aquavella JV, Gearing MD, Akpek EK, McCormick GJ. Pediatric keratoprosthesis. *Ophthalmology*. 2007;114(5):989-994.
- Sayegh RR, Ang LPK, Foster CS, Dohlman CH. The Boston Keratoprosthesis in Stevens-Johnson Syndrome: An update. *Am J Ophthalmol*. 2008;145:438-444.
- Harissi-Dagher M, Beyer J, Dohlman CH. The role of soft contact lenses as an adjunct to the Boston Keratoprosthesis. *Int Ophthalmol Clin*. 2008;48(2):43-51.
- McLellan CL, Ngo V, Pasedia S, Dohlman CH. Long-term stability of vancomycin ophthalmic solution. *Int J Pharm Comp*. 2008;12:456-458.
- Harissi-Dagher M, Colby KA. Cataract extraction after implantation of a Type I Boston Keratoprosthesis. *Cornea*. 2008;27(2):220-222.
- Garcia JP Jr, de la Cruz J, Rosen RB, Buxton DF. Imaging implanted keratoprosthesis with anterior-segment optical coherence tomography and ultrasound biomicroscopy. *Cornea*. 2008; 27(2):180-188.
- Pavan-Langston D, Dohlman CH. Boston Keratoprosthesis: Treatment of herpes zoster neurotrophic keratopathy. *Ophthalmology*. *Ophthalmology*. 2008;115(2 Suppl):S21-3.
- Aquavella JV. Keratoprosthesis revisited: Current status of keratoprosthesis surgery. *Contemporary Ophthalmology*. 2008;7(7):1-8.
- Aquavella JV. Keratoprosthesis in the treatment of congenital cornea opacity. *Contemporary Ophthalmology*. 2008;7(8):1-6.
- Harissi-Dagher M, Dohlman CH. The Boston Keratoprosthesis in severe ocular trauma. *Can J Ophthalmol*. 2008;43(2):165-169.
- Dohlman CH, Colby K, Harissi-Dagher M. The Boston Keratoprosthesis: Users manual, 3rd edition. Massachusetts Eye and Ear Infirmary, Boston, MA; 2008.
- John T. Artificial cornea: Surgical use of Boston Keratoprosthesis. *Ann Ophthalmol (Skokie)*. 2008;40(1):2-7.
- Waller S, Dohlman CH. "The Boston Keratoprosthesis." In: Brightbill F, ed. *Corneal Surgery: Theory, Technique and Tissue*, 4th edition. St. Louis: Mosby; 2009:691-696.
- Sa-ngiampornpanit T, Thiagalingam S, Dohlman CH. Boston Keratoprosthesis in epithelial downgrowth. *Digit J Ophthalmol*. 2009;15:1.
- Ciolino JB, Dohlman CH. Biological Keratoprosthesis materials. *Int Ophthalmol Clin*. 2009; 49:1-9.
- Dohlman J, Foster CS, Dohlman CH. Boston Keratoprosthesis in Stevens-Johnson Syndrome: A case of using infliximab to prevent tissue necrosis. *Digit J Ophthalmol*. 2009; 15:1-5.
- Todani A, Gupta P, Colby K. Type I Boston Keratoprosthesis with cataract extraction and intraocular lens placement for visual rehabilitation of herpes zoster ophthalmicus: The "KPro Triple". *Br J Ophthalmol*. 2009;93(1):119.

- Aldave AJ, Kamal KM, Vo RC, Yu F. The Boston Type I Keratoprosthesis: Improving outcomes and expanding indications. *Ophthalmology*. 2009;116(4):640-651.
- Bradley JC, Hernandez EG, Schwab IR, Mannis MJ. Boston Type I Keratoprosthesis: The University of California Davis experience. *Cornea*. 2009;28(3):321-327.
- Ciolino JB, Hoare TR, Iwata NG, Behlau I, Dohlman CH, Langer R, Kohane DS. A drug-eluting contact lens. *Invest Ophthalmol Vis Sci*. 2009;50(7):3346-3352.
- Durand ML, Dohlman CH. Successful prevention of bacterial endophthalmitis in eyes with the Boston Keratoprosthesis. *Cornea*. 2009;28(8): 896-901.
- Rivier D, Paula JS, Kim E, Dohlman CH, Grosskreutz CL. Glaucoma and keratoprosthesis surgery: Role of adjunctive cyclophotocoagulation. *Glaucoma*. 2009;18(4):321-324.
- Ament JD, Spurr-Michaud SJ, Dohlman CH, Gipson IK. The Boston Keratoprosthesis: Comparing corneal cell compatibility with titanium and PMMA backplates. *Cornea*. 2009; 28(7):808-811.
- Ciolino JB, Dohlman CH, Kohane DS. Contact lens for drug delivery. *Semin Ophthalmol*. 2009; 24(3):156-160.
- Fintelmann RE, Maguire JI, Ho AC, Chew HF, Ayres BD. Characteristics of endophthalmitis in patients with the Boston Keratoprosthesis. *Cornea*. 2009; 28:877-878.
- Klufas MA, Starr CE. The Boston Keratoprosthesis. An update on recent advances. *Cataract & Refractive Surgery Today*. 2009;1-3.
- Chew HF, Ayres BD, Hammersmith KM, Rapuano CJ, Laibson PR, Myers JS, Jin YP, Cohen EJ. Boston Keratoprosthesis outcomes and complications. *Cornea*. 2009; 28(9):989-996.
- Sayegh RR, Avena Diaz L, Vargas-Martín F, Webb RH, Dohlman CH, Peli E. Optical functional properties of the Boston Keratoprosthesis. *Invest Ophthalmol Vis Sci*. 2010;51(2):857-863.
- Dohlman CH, Grosskreutz CL, Chen TC, Pasquale LR, Rubin PA, Kim EC, Durand M. Shunts to divert aqueous humor to distant epithelialized cavities after keratoprosthesis surgery. *J Glaucoma*. 2010;19(2):111-115.
- Dunlap K, Chak G, Aquavella JV, Myrowitz E, Utine CA, Akpek E. Short-term visual outcomes of Boston type 1 keratoprosthesis implantation. *Ophthalmology*. 2010;117(4):687-692.
- Garcia JP Jr, Ritterband DC, Buxton DF, de la Cruz J. Evaluation of the stability of Boston Type I Keratoprosthesis-Donor cornea interface using anterior segment optical coherence tomography. *Cornea*. 2010;29(9):1031-1035.
- Tay E, Utine CA, Akpek EK. Crescentic amniotic membrane grafting in Keratoprosthesis-associated cornea melt. *Arch Ophthalmol*. 2010;128(6):779-782.
- Yildiz E, Saad C, Eagle R, Ayers B, Cohen E. The Boston Keratoprosthesis in 2 patients with autoimmune polyendocrinopathy-candidiasis-ectodermal dystrophy. *Cornea*. 2010; 29(3):354-356.
- Kanoff J, Colby K. Pigmented deposits on a Boston Keratoprosthesis from topical ibopamine. *Cornea*. 2010;29(9):1069-1071.
- Harissi-Dagher M, Khan BF, Dohlman CH. The Boston Keratoprosthesis. In: Corneal Transplantation. Vajpayee RB, ed, Sharma N, Tabin GC, Taylor HR, co-eds. New Delhi: Vajaypee Brothers Medical Publishers; 2010.
- Ament JD, Stryjewski TP, Ciolino JB, Todani A, Chodosh J, Dohlman CH. Cost-effectiveness of the Boston Keratoprosthesis. *Am J Ophthalmol*. 2010;149(2):221-228.e2.

- Ament JD, Todani A, Pineda R 2nd, Shen TT, Aldave AJ, Dohlman CH, Chodosh J. Global corneal blindness and the Boston Keratoprosthesis Type I (editorial). *Am J Ophthalmol*. 2010;149(4):537-539.
- Ament JD, Tilahun Y, Mudawi E, Pineda R. Role for ipsilateral autologous corneas as a carrier for the Boston Keratoprosthesis: The Africa experience. *Arch Ophthalmol*. 2010;128(6):795-797.
- Tsui I, Usulan DZ, Hubschman JP, Deng SX. Nocardia farcinica infection of a Baerveldt implant and endophthalmitis in a patient with a Boston Type I Keratoprosthesis. *J Glaucoma*. 2010;19(5):339-340.
- Vajaranant TS, Blair MP, McMahon T, Wilensky JT, de la Cruz J. Special considerations for pars plana tube-shunt placement in Boston Type I Keratoprosthesis. *Arch Ophthalmol*. 2010;128(11):1480-1482.
- Chak G, Aquavella JV. A safe Nd:YAG retroprosthetic membrane removal technique for keratoprosthesis. *Cornea*. 2010;29(10):1169-1172.
- Utine CA, Gehlbach PL, Zimmer-Galler I, Akpek EK. Permanent keratoprosthesis combined with pars plana vitrectomy and silicone oil injection for visual rehabilitation of chronic hypotony and corneal opacity. *Cornea*. 2010;29(12):1401-1405.
- Ciralsky J, Papaliadis GN, Foster CS, Dohlman CH, Chodosh J. Keratoprosthesis in autoimmune disease. *Ocul Immunol Inflamm*. 2010;18(4):275-280.
- Pineles SL, Ela-Dalman N, Rosenbaum AL, Aldave AJ, Velez FG. Binocular visual function in patients with Boston type I keratoprostheses. *Cornea*. 2010;29(12):1397-1400.
- Klufas MA, Colby KA. The Boston Keratoprosthesis. *Int Ophthalmol Clin*. 2010;50(3):161-175.
- Georgalas I, Kanelopoulos AJ, Petrou P, Ladas I, Gotzaridis E. Presumed endophthalmitis following Boston Keratoprosthesis treated with 25 gauge vitrectomy: A report of three cases. *Graefes Arch Clin Exp Ophthalmol*. 2010;248(3):447-450.
- Jun JJ, Siracuse-Lee DE, Daly MK, Dohlman CH. Keratoprosthesis. In: Krigelstein GK, Weinreb RN, eds. *Cornea and External Eye Diseases*, 2nd edition. Springer Verlag, Berlin; 2010;137-144.
- Qian CX, Harissi-Dagher M. Delayed suprachoroidal haemorrhage following Boston Keratoprosthesis in two aniridic patients. *Br J Ophthalmol*. 2011;95(3):436-437.
- Oliveira L, Cade F, Dohlman C. Keratoprosthesis in the fight against corneal blindness in developing countries (editorial). *Arg Bras Oftalmol*. 2011;74(1):5-6.
- Harissi-Dagher M. Boston Keratoprosthesis: Expanding the boundaries (editorial). *Digit J Ophthalmol*. 2011;17(4):53-54.
- Kyrrillos R, Harissi-Dagher M. A failed corneal graft as a support for the Boston Keratoprosthesis type 1. *Digit J Ophthalmol*. 2011;17(4):72-73.
- Kyrrillos R, Harissi-Dagher M. Prolene monofilament suture in Boston Keratoprosthesis surgery. *Digit J Ophthalmol*. 2011;17(1):6-8.
- Robert M-C, Harissi-Dagher M. Boston Type I Keratoprosthesis: the CHUM experience. *Can J Ophthalmol*. 2011;46(2):164-168.
- Mousally K, Harissi-Dagher M. Long-term complications associated with glaucoma drainage devices and Boston Keratoprosthesis. *Am J Ophthalmol*. 2011;152(5):883-4; author reply 884-5.
- Stacy RC, Jakobiec FA, Michaud NA, Dohlman CH, Colby KA. Characterization of retrokeratoprosthesis membranes in the Boston type 1 keratoprosthesis. *Arch Ophthalmol*. 2011;129(3):310-316.

- Chodosh J, Dohlman CH. Indications for keratoprosthesis. In: Krachmer J, Mannis M, Holland E, eds. *Cornea*, 3rd edition. St. Louis: Mosby; 2011:1689-1691.
- Dohlman CH, Gelfand L, Walcott-Harris, R, Moar ML. Boston Keratoprosthesis Users Manual 2011. Massachusetts Eye and Ear Infirmary, Boston.
- Beyer J, Todani A, Dohlman C. Prevention of visually debilitating deposits on soft contact lenses in keratoprosthesis patients. *Cornea*. 2011;30(12):1419-1422.
- Ament JD, Stryjewski TP, Pujari S, Siddique S, Papaliadis GN, Chodosh J, Dohlman CH. Cost effectiveness of the type II Boston Keratoprosthesis. *Eye (Lond)*. 2011;25(3):342-9.
- Cade F, Grosskreutz CL, Tauber A, Dohlman CH. Glaucoma in eyes with severe chemical burn, before and after keratoprosthesis. *Cornea*. 2011; 30(12):1322-1327.
- Dohlman CH, Cade F, Pfister R. Chemical burns to the eye: Paradigm shifts in treatment (editorial). *Cornea*. 2011; 30(6):613-614.
- Todani A, Ciolino JB, Ament JD, Colby KA, Pineda R, Belin MW, Aquavella JV, Chodosh J, Dohlman CH. Titanium back plate for a PMMA keratoprosthesis: clinical outcomes. *Graefes Arch Clin Exp Ophthalmol*. 2011;249(10):1515-1518.
- Pujari S, Siddique SS, Dohlman CH, Chodosh J. Boston Keratoprosthesis Type II: The Massachusetts Eye and Ear Infirmary experience. *Cornea*. 2011;30(12):1298-1303.
- Li JY, Greiner MA, Brandt JD, Lim MC, Mannis MJ. Long-term complications associated with glaucoma drainage devices and Boston Keratoprosthesis. *Am J Ophthalmol*. 2011;152(2):209-218.
- Greiner MA, Li JY, Mannis MJ. Longer-term vision outcomes and complications with the Boston type 1 keratoprosthesis at the University of California, Davis. *Ophthalmology*. 2011;118(8):1543-50.
- Basu S, Taneja M, Sangwan VS. Boston type 1 keratoprosthesis for severe blinding vernal keratoconjunctivitis and Mooren's ulcer. *Int Ophthalmol*. 2011;31(3):219-222.
- Haddadin RI, Dohlman CH. Keratoprosthesis in congenital hereditary endothelial dystrophy after multiple failed grafts. *Digit J Ophthalmol*. 2011;17(3):43-45.
- Utine CA, Tzu J, Dunlap K, Akpek EK. Visual and clinical outcomes of explantation versus preservation of the intraocular lens during keratoprosthesis implantation. *J Cataract Refract Surg*. 2011;37(9):1615-1622.
- Utine CA, Tzu JH, Akpek EK. Clinical features and prognosis of Boston Type I Keratoprosthesis-associated corneal melt. *Ocul Immunol Inflamm*. 2011;19(6):413-418.
- Banitt M. Evaluation and management of glaucoma after keratoprosthesis. *Curr Opin Ophthalmol*. 2011; 22(2):133-136.
- Ciolino JB, Hudson SP, Mobbs AN, Hoare TR, Iwata NG, Fink GR, Kohane DS. A prototype antifungal contact lens. *Invest Ophthalmol Vis Sci*. 2011; 52(9):6286-6291.
- Behlau I, Mukherjee K, Todani A, Tisdale AS, Cade F, Wang L, Leonard EM, Zakka FR, Gilmore MS, Jakobiec FA, Dohlman CH, Klibanov AM. Biocompatibility and biofilm inhibition of N,N-hexyl,methyl-polyethylenimine bonded to Boston Keratoprosthesis materials. *Biomaterials*. 2011;32(34):8783-8796.
- Todani A, Behlau I, Fava MA, Cade F, Cherfan DG, Zakka FR, Jakobiec FA, Gao Y, Dohlman CH, Melki SA. Intraocular pressure measurement by radio wave telemetry. *Invest Ophthalmol Vis Sci*. 2011;52(13):9573-9580.

Iyer G, Srinivasan B, Gupta J, Rishi P, Sen PR, Bhende P, Gopal L, Padmanabhan P. Boston Keratoprosthesis for keratopathy in eyes with retained silicone oil: A new indication. *Cornea*. 2011;30(10):1083-1087.

Jeong KJ, Wang L, Stefanescu CF, Lawlor M, Polat J, Dohlman CH, Langer RS, Kohane DS. Polydopamine coatings enhance biointegration of a model polymeric implant. *Soft Matter*. 2011; 7(18):8305-8312.

Wang L, Jeong KJ, Chiang HH, Zurakowski D, Behlau I, Chodosh J, Dohlman CH, Langer R, Kohane DS. Hydroxyapatite for keratoprosthesis biointegration. *Invest Ophthalmol Vis Sci*. 2011;52(10):7392-7399.

Chan CC, Holland EJ, Sawyer WI, Neff KD, Petersen MR, Riemann CD. Boston type 1 keratoprosthesis combined with silicone oil for treatment of hypotony in prephthical eyes. *Cornea*. 2011; 30(10):1105-1109.

Sejpal K, Yu F, Aldave AJ. The Boston Keratoprosthesis in the management of corneal limbal stem cell deficiency. *Cornea*. 2011;30(11):1187-1194.

Verdejo-Gómez L, Peláez N, Gris O, Güell JL. The Boston Type I Keratoprosthesis: an assessment of its efficacy and safety. *Ophthalmic Surg Lasers Imaging*. 2011;42(6):446-452.

Yu JF, Liang L, Huang YF. Keratoprosthesis surveillance cultures (letter to the editor). *Ophthalmology*. 2012;119(1):202-203; author reply 203.

Cortina MS, Porter IW, Sugar J, de la Cruz J. Boston Type I Keratoprosthesis for visual rehabilitation in a patient with gelatinous drop-like corneal dystrophy. *Cornea*. 2012 Jul;31(7):844-845.

Robert MC, Biernacki K, Harissi-Dagher M. Boston Keratoprosthesis type 1 surgery: use of frozen versus fresh corneal donor carriers. *Cornea*. 2012;31(4):339-345.

Rudnisky CJ, Belin MW, Todani A, Al-Arfaj K, Ament JD, Zerbe BJ, Ciolino JB; Boston Type 1 Keratoprosthesis Study Group. Risk factors for the development of retroprosthetic membranes with Boston Keratoprosthesis type 1: Multicenter study results. *Ophthalmology*. 2012;119(5):951-955.

Chan CC, Holland EJ. Infectious endophthalmitis after Boston Type I Keratoprosthesis implantation. *Cornea* 2012;31:346-349

Chan CC, Holland EJ. Infectious Keratitis after Boston Type I Keratoprosthesis implantation. *Cornea* 2012; 31:1128-1134

Ramchandran RS, DiLoreto DA, Chung MM, Kleinman DM, Plotnik RP, Graman P, Aquavella JV. Infectious endophthalmitis in adult eyes receiving Boston Type I keratoprosthesis. *Ophthalmology* 2012;119:674-681

Kamyar R, Weizer JS, dePaula FH, Stein JD, Morai SE, John D, Musch D, Mian S. Glaucoma associated with Boston Type I keratoprosthesis. *Cornea* 2012; 31:134-139

Kumar R, Dohlman CH, Chodosh J. Oral acetazolamide after keratoprosthesis in Stevens-Johnson Syndrome. *BMC Research Notes* 2012; 5:205

Dokey A. Ramulu PR, Utine CA, Tzu JH, Ebhart CG, Shan S, Gehlbach PL, Akpek EK. Chronic hypotony associated with the Boston Type I Keratoprosthesis. *Am J Ophthalmol* 2012; 154:266-271

Akpek EK, Aldave AJ, Aquavella JV. The use of precut, γ -irradiated corneal lenticules in Boston Type I keratoprosthesis implantation. *Am J Ophthalmol* 2012; 154:495-498

Bakhtiari P, Chan C, Welder JD, de la Cruz J, Holland EJ, Djalilian AR. Surgical and visual outcomes of the Type I Boston Keratoprosthesis for the management of aniridic fibrosis syndrome in congenital aniridia. *Am J Ophthalmol* 2012; 153:967-971

- Patel S, Takusagawa H, Shen L, Dohlman CH, Grosskreutz C. Long-term complications associated with glaucoma drainage devices and Boston Keratoprosthesis. *Am J Ophthalmol* 2012; 154:207-208
- Kang JJ, Allemann N, Cortina MS, de la Cruz J, Aref AA. Argon laser iridoplasty for optic obstruction of Boston keratoprosthesis. *Arch Ophthalmol* 2012; 130:1051-1054
- Kang JJ, de la Cruz J, Soledad Cortina MS. Visual outcomes of Boston Keratoprosthesis implantation as the primary penetrating corneal procedure. *Cornea*. 2012; 31:1436-1440.
- Hou JH, Cruz JD, Djalilian AR. Outcomes of Boston Keratoprosthesis implantation for failed keratoplasty after keratolimbic allograft. *Cornea* 2012; 31:1432-1435.
- Robert MC, Moussally K, Harissi-Dagher M. Review of endophthalmitis following Boston keratoprosthesis type I. *Br J Ophthalmol* 2012; 96:776-780.
- Pineda R. Introducing new technology with an eye on sustainability. Humanitarian Outreach. *Advanced Ocular Care* 2012; March/April:60-62.
- Aldave AJ, Sangwan VS, Basu S, Basak SK, Hovakimyan A, Gevorgyan O, Al Kharashi S, Al Jindan M, Tandon R, Mascarenhas J, Malyugin B, Padilla, MDB, Maskati Q, Agarwala N, Hutaauruk J, Sharma M, Yu F. International results with the Boston Type I Keratoprosthesis. *Ophthalmology* 2012; 119:1530-1538.
- Kiang L, Rosenblatt MI, Sartaj R, Fernandez AG, Kiss S, Radcliffe NM, D'Amico DJ, Sippel KC. Surface epithelialization of the type I Boston keratoprosthesis front plate: immunohistochemical and high-definition optical coherence tomography characterization. *Graefes Arch Clin Exp Ophthalmol* 2012; 250:1195-1199.
- Iyer G, Srinivasan B, Agarwal S, Barbhaya. Visual rehabilitation with keratoprosthesis after tenoplasty as the primary globe-saving procedure for severe ocular chemical injuries. *Graefes Arch Clin Exp Ophthalmol* 2012; 250:1787-1793.
- Chen JL, Shen TT, Brady J, Herlihy EP. Strabismus surgery in a patient with a Boston KPro keratoprosthesis. *J Am Assoc Pediatr Ophthalmol Strabismus* 2012; 16:476-477.
- Wang L, Huang Y, Gong Y, et al. Role of autologous corneas as a carrier for the Boston Keratoprosthesis. *Chinese J Optometry Ophthalmol Vis Sci* 2012; 14: 453-456.
- Shihadeh WA, Mohidat HM. Outcomes of the Boston Keratoprosthesis in Jordan. *Middle East Afr J Ophthalmol* 2012; 19:97-100.
- Al Arfaj K, Hantera M. Short-term visual outcomes of Boston Keratoprosthesis Type I in Saudi Arabia. *Middle East Afr J Ophthalmol* 2012; 19:88-92.
- Vora, GK, Colby KA. Management of glaucoma following Boston Keratoprosthesis. *European Ophthalmic Review* 2012; 6:214-217.
- Bajracharya L, Gurung R, Tabin G. Keratoprosthesis, Dohlman Type I device for a patient with repeated corneal graft failure. *Nepal J Ophthalmol* 2012; 4:165-169.
- Magalhães FP, Sousa LB, Oliveira LA. Boston Type I keratoprosthesis. Review. *Arq Bras Oftalmol* 2012; 75:218-222.
- Talajic JC, Agoumi Y, Gagné S, Mousally K, Harissi-Dagher M. Prevalence, progression and impact of glaucoma on vision after Boston Type I keratoprosthesis surgery. *Am J Ophthalmol* 2012; 153:267-274.

- Dutta J, Mukhopadhyay S, Data H, Sen S. Boston keratoprosthesis restoring vision in an unusual case of end-stage limbal stem cell deficiency following exposure to Euphorbia latex. *Int Ophthalmol* 2012; 32:77-79.
- Keating A, Pineda R. Trichosporon asahii keratitis in a patient with a Type I Boston keratoprosthesis and contact lens. *Eye & Contact Lens* 2012; 38:130-132.
- Patel AP, Wu EI, Ritterband DC, Seedor JA. Boston Type I Keratoprosthesis: the New York Eye and Ear experience. *Eye* 2012;26:418-425
- Kiang L, Sippel KC, Starr CE, Ciralsky J, Rosenblatt MI, Radcliffe NM, D'Amico DJ, Kiss S. Vitreoretinal surgery in the setting of a permanent keratoprosthesis. *Arch Ophthalmol* 2012;130:487-492
- Iyer G, Srinivasan B, Gupta N, Padmanabhan P. Outcome of Boston Keratoprosthesis in a Developing Country - Importance of patient selection, education and perioperative care: The Indian experience. *Asia-Pacific J Ophthalmol* 2012;1:202-207
- Ayers B. Characteristics of endophthalmitis in patients with the Boston Keratoprosthesis. *Cornea* 2012;31:846
- Jain V, Kanupriya M, Shome D, Pineda R. Fungal keratitis with the Type I Boston Keratoprosthesis: Early Indian Experience. *Cornea* 2012;31:841-843
- Koller B, Neuhann T, Neuhann I. Results with the Boston keratoprosthesis. *Ophthalmology* 2012;109:454-461
- Magalhães FP, Nascimento HM, Ecker DJ, Sannes-Lowery KA, Sampath R, Rosenblatt MI, Barbosa de Sousa, Oliveira LA. Microbiota evaluation of patients with a Boston Type I Keratoprosthesis treated with topical 0.5% moxifloxacin and 5% providone-iodine. *Cornea* 2013;32:407-411
- Adesena O, Vickery J, Ferguson C, Stone D. Stromal melting associated with a cosmetic contact lens over a Boston Keratoprosthesis: Treatment with a conjunctival flap. *Eye & Contact Lens* May 2013;39:e 4-6
- Rai R, Shorter E, Cortina MS, McMahon T, Cruz JD. Contact Lens Surveillance Cultures in Boston Type I keratoprosthesis patients. *Eye Contact Lens* March 2013;39;175-178
- Sayegh R, Dohlman CH. Wide-angle fundus imaging through the Boston Keratoprosthesis. *Retina* 2013;33:1188-1192
- Palioura S, Kim B, Dohlman CH, Chodosh J. Boston Keratoprosthesis Type I in mucous membrane pemphigoid. *Cornea* 2013;32:956-961
- Magalhães FP, Hirai FE, de Sousa LB, Oliveira, LA. Boston type I keratoprosthesis outcomes in ocular burns. *Acta Ophthalmol* 2013; 91:432-436
- Paschalis EI, Chodosh J, Spurr-Michaud S, Cruzat A, Tauber A, Behlau I, Gipson I, Dohlman CH. In vitro and In vivo assessment of titanium surface modification for coloring the backplate of the Boston keratoprosthesis. *IOVS* 2013;54 :3863-3873
- Rixen JJ, Cohen AW, Kitzmann AS, Wagoner MD, Goins KM. Treatment of aniridia with Boston Type I Keratoprosthesis. *Cornea* 2013 :32 ;947-950
- Ciolino JB, Belin MW, Todani A, Al-Arfaj K, Rudnisky CJ. Retention of the Boston Keratoprosthesis Type I : Multicenter study results. *Ophthalmology* 2013 :6 ;1195-2000
- Shapiro BL, Cortés DE, Chin EK, Li JY, Werner JS, Redenbo E, Mannis MJ. High-resolution spectral domain anterior segment optical coherence tomography in Type I Boston Keratoprosthesis. *Cornea* 2013 ;32 :951-955

- Sivaraman KR, Hou JH, Allemann N, de la Cruz, J, Soledad Cortina M. Retroprosthetic membrane and risk of sterile keratolysis in patients with Type I Boston Keratoprosthesis. *Am J Ophthalmol* 2013 ;155 :814-822
- Goldman DR, Hubschman J, Aldave AJ, Chiang A, Huang JS, Bourges J, Schwartz SD. Postoperative posterior segment complications in eyes treated with the Boston Type I Keratoprosthesis. *Retina* 2013;33 :532-541
- Kim MJ, Bakhtiari P, Aldave AJ. The international use of the Boston Type I Keratoprosthesis. *Int Ophthalmol Clin* 2013;53 :79-89
- Paschalis EI, Chodosh J, Sperling RA, Salvador-Culla B, Dohlman CH. A novel implantable glaucoma valve using ferrofluid. *PLoS ONE* 2013 ;8 :e67404
- Robert MC, Pomerleau V, Harissi-Dagher, M. Complications associated with Boston keratoprosthesis Type I and glaucoma drainage devices. *Br J Ophthalmol* 2013 ;97 :573-577
- Langenbucher A, Szentmáry N, Speck A, Seitz B, Eppig T. Calculation of power and field of view of keratoprostheses. *Ophthalmic & Physiologic Optics* 2013:1-8
- Arafat SN, Suelves AM, Spurr-Michaud S, Chodosh J, Foster CS Dohlman CH, Gipson IK. Neutrophil collagenase, Gelatinase B and Myeloperoxidase in tears of Stevens-Johnson Syndrome and mucous membrane pemphigoid patients. *Ophthalmology* in press.
- D'Amico DJ. New Methods for Retinal Examination in Eyes with a Boston Keratoprosthesis. Editorial. *Retina* 2013, in press
- Robert MC, Eid EP, Saint-Antoine P, Harissi-Dagher M. Microbial colonization and antibacterial resistance patterns after Boston type I Keratoprosthesis. *Ophthalmology* 2013 in press
- Chan CC. Oral buccal mucous membrane allograft with corneal lamellar graft for the repair of Boston Type I Keratoprosthesis stromal melt. *Cornea* 2013 in press
- Harissi-Dagher M, Durr GM, Biernacki K, Sebag M, Rhéaume MA. Pars plana vitrectomy through the Boston Keratoprosthesis Type I. *Eye* 2013 in press
- Cruzat, A, Shukla A, Dohlman CH, Colby, K. Wound anatomy following Type I Boston Keratoprosthesis using oversized back plates. *Cornea* in press
- Wang L, Huang Y, Chodosh J, Dohlman CH. Boston Keratoprosthesis in China (in Chinese). *ZhongHua YanKe ZaZhi*. in press
- Behlau I, Martin KV, Martin JN, Naumova EN, Cadorette JJ, Sforza JT, Dohlman CH. Boston keratoprosthesis infectious endophthalmitis : Incidence and prevention. Submitted to *Acta Ophthalmol*
- Cruzat A, Tauber A, Shukla A, Paschalis E, Bozorg S, Pineda R, Dohlman CH. Low-cost and readily available tissue carriers for the Boston Keratoprosthesis : a review of possibilities. Submitted to *J Ophthalmol*
- Cade F, Paschalis EI, Regatieri CV, Vavvas D, Dana R, Dohlman CH. Alkali burn to the eye : protection using TNF- α inhibition. Submitted to *Cornea*
- Salvador-Culla, B, Behlau I, Sayegh RR, Stacy RC, Dohlman CH, Delori, F. Very low risk of light-induced retinal damage during Boston Keratoprosthesis surgery. A rabbit study. Submitted to *Cornea*

You're invited... Please join us!

American Academy of Ophthalmology Meeting

November 16-19, 2013 New Orleans, LA

SCHEDULE OF EVENTS

Sunday, November 17

■ 9:00 am – 11:15 am

Course Title: Surgery for Severe Corneal and Ocular Surface Disease

Course Director: Ali R. Djalilian, MD

Associate Instructors: Gunther Grabner, MD, Edward J. Holland, MD, Scheffer C. G. Tseng, MD, PhD, James Chodosh, MD, MPH, Ahmad Kheirkhah, MD, Maria S. Cortina, MD, Victor L. Perez, MD

Course Number: 104 | Room: 214

■ 10:15 am – 12:30 pm

Topic: Cornea, External Disease

Course Title: The Boston Keratoprosthesis: Case-Based Presentations Highlighting the Essentials for Beginning and Experienced Surgeons

Course Director: Anthony J. Aldave, MD

Associate Instructors: Esen K. Akpek, MD, James V. Aquavella, MD, Michael W. Belin, MD, James Chodosh, MD, MPH, Kathryn A. Colby MD, PhD, Claes H. Dohlman, MD, PhD, Sadeer B. Hannush, MD

Course Number: 151 | Room: 209

Monday, November 18

■ 10:15 am – 12:30 pm

Topic: Cornea, External Disease

Course Title: Extreme Cornea: Diagnostic and Management Dilemmas in Your Practice

Course Director: Ula Jurkunas, MD

Associate Instructors: Kathryn A. Colby, MD, PhD, James Chodosh, MD, MPH, Roberto Pineda II, MD, Deborah S. Jacobs, MD, Samir A. Melki, MD, PhD

Course Number: 335 | Room: 346-347

KPro Events

Boston KPro Users Breakfast

Monday, November 18

7:00 am – 8:30 am

Hilton Riverside Hotel, New Orleans
Ascot/Newberry Room

For more information:

Contact mary_moar@meei.harvard.edu

28th Biennial Cornea Conference

October 18-19

The Starr Center
185 Cambridge Street, Boston MA

This premier anterior segment conference explores current clinical and laboratory research aimed at generating new treatments for the numerous disease entities that afflict the front part of the eye.

For more information:

Contact cornea_conf@meei.harvard.edu

To register:

Visit www.schepens.harvard.edu/registration/cornea-conference-links/registration.html



HARVARD
MEDICAL SCHOOL

DEPARTMENT OF
Ophthalmology



**Massachusetts
Eye and Ear**
experience. life.

243 Charles Street, Boston, MA 02114

Boston KPro *e-news*

*Please let us know
if you would like to
receive the e-mail
version of Boston
KPro news or if your
mailing address has
changed.*

E-mail your contact information to:

larisa_gelfand@meei.harvard.edu

kpro_service@meei.harvard.edu

Or send via fax to:

(617) 573-4369

NAME: _____

MAILING ADDRESS: _____

E-MAIL ADDRESS: _____

PHONE NUMBER: _____

FAX NUMBER: _____