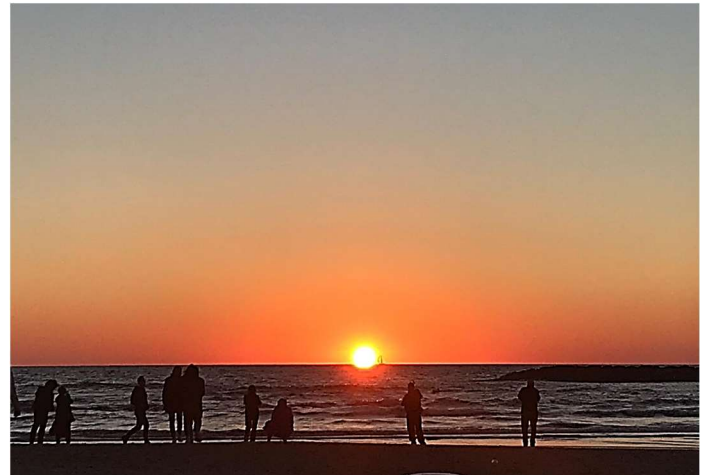
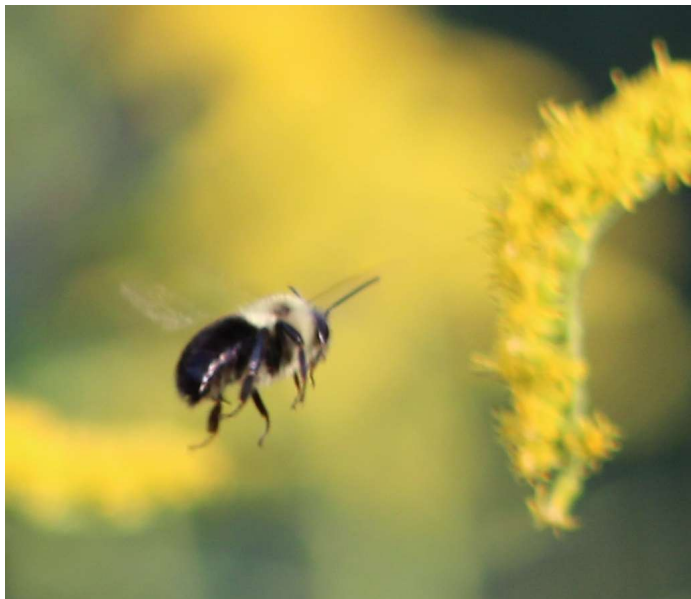




**The end-winter new moon smiles down;
Faithfully following appointed rounds;
A vision of harmony in the heavens above;
Growing to fullness welcomes in spring.**



**Spring forward, fall back – the sun does not know;
Day cycles into night in their set pattern;
Marking time is in human perception;
Lose an hour, gain an hour – the world goes on;
The challenge is how to use the time well.**



**Create a path to mutual support and sustenance;
Continue with intrepid perseverance;
The goal of renewal ever in hope-filled sight;
Willing to accept the opportunities to grow.**



Change Happens

**Seasons cycle as each year renews;
Change offers abundant opportunities for growth;
Not to stagnate but to seek to improve;
Be the change that brings blessings.**

Chaplain Sam Seicol

samuel_seicol@meei.harvard.edu